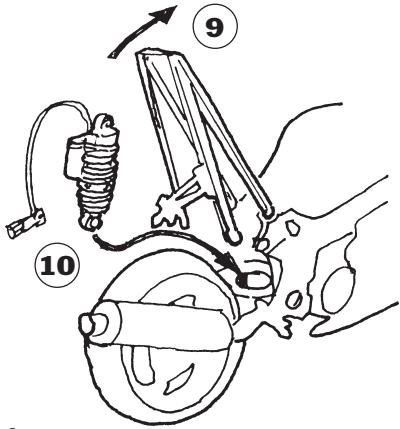


9

Lift the rear frame upwards as much as possible and remove the shock absorber by lifting it upwards.

10

Fit the Öhlins shock absorber in reverse order. The piggyback towards left. Fasten it by first attaching the upper, then the lower original bolt.

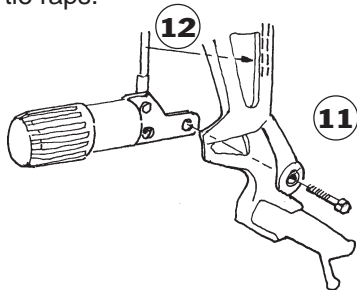


11

Attach the hydraulic preload adjuster to the wheel side of the right silencer bracket by using the bolt provided (M8x50)

12

Fit the hose on the backside of the silencer bracket on the right side of the motorcycle. Fasten the hose with the tie raps.



NOTE!

The easiest access to the rebound adjustment knob is from the right side if the motorcycle, underneath the rear frame.

NOTE!

Make sure that all bolts are tightened to the correct torque and that nothing fouls the shock absorber when the suspension is being compressed.

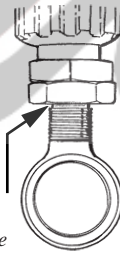
Check with the Service Manual of the motorbike.

13

Continue your work according to the Owners Manual, section Adjustments

WARNING!

This particular model has an adjustable end eye. The eye must not be screwed out more than that the groove is fully visible beneath the lock nut. Make sure that the lock nut is tightened after adjustment. Groove



Traction, handling,
comfort and safety



Öhlins Racing AB

Box 722, S-194 27 Upplands Väsby, Sweden.
Phone +46 8 590 025 00, fax +46 8 590 025 80.

Mounting instructions

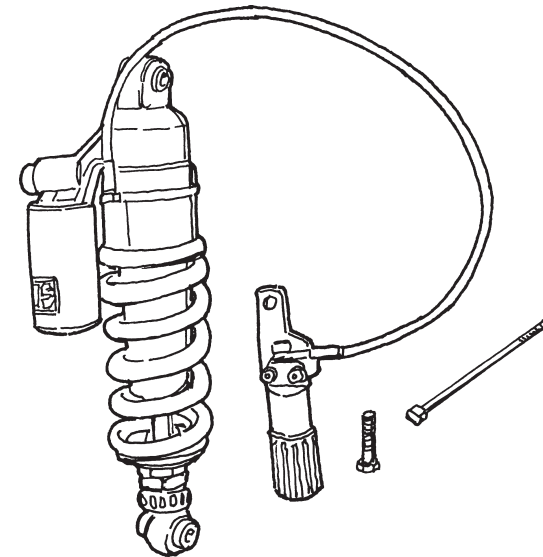
TR851 - TRIUMPH SPRINT ST 1999

Kit contents

1. Shock absorber Type 46PRCS	TR 851	1
2. Bolt M8x50	1046-25	1
3. Tie rap	231-01	2
4. Sticker Öhlins	192-01	2
5. Sticker Memo note	1180-01	1
6. Owners Manual		1

Set-up data

Length	344 mm (+5/-1mm)
Stroke	64 mm
Rebound adjustment	14
Compression adjustment	10
Preload	13 mm



TR 851, ISSUED 99 02 08



Safety signals

Important information concerning safety is distinguished in this manual by the following notations



The Beware sign means:
Pay attention!
Your safety is at risk.

⚠ WARNING!

Failure to follow Warning text could result in **serious or fatal injury** to anyone working with, inspecting or using the suspension, or to bystanders.

CAUTION!

Caution indicates special precautions that must be taken to avoid damage to the suspension.

NOTE!

This indicates information that is of importance with regard to procedures

Kit contents

Before installing the shock absorber kit, please check the contents, listed on the front page of this instruction. If anything is missing, contact your Öhlins dealer.

NOTE!

During storage and transportation, especially at high ambient temperature, the oil and grease used for assembling may run out inside the packing and damage the expanded polystyrene packing material. This is not unusual and is in no way detrimental to the shock absorber.

Before you start

⚠ WARNING!

Installing a shock absorber, that is not approved by the motorcycle manufacturer, may affect the stability of your motorcycle. Öhlins Racing AB can't be held responsible for any personal injury or damage whatsoever which may occur after fitting the shock absorber.

Öhlins Racing AB can not be held responsible for any damage whatsoever to spare parts, or injury to persons, if the instructions for servicing and maintenance are not followed exactly. Similarly, the guarantees relating to performance and reliability will become null and void if the instructions are not adhered to.

⚠ WARNING!

Please study the mounting instructions and the owner's and workshop manuals thoroughly before handling this shock absorber kit.

⚠ WARNING!

When installing the Öhlins shock absorber the motorcycle workshop manual must be at hand.

NOTE!

Öhlins products are subject to continual improvement and development in design and quality. Consequently, although these instructions include the most up-to-date information available at the time of printing, there may be minor differences between your suspension and this manual. Please consult your Öhlins dealer if you have any questions concerning the manual.

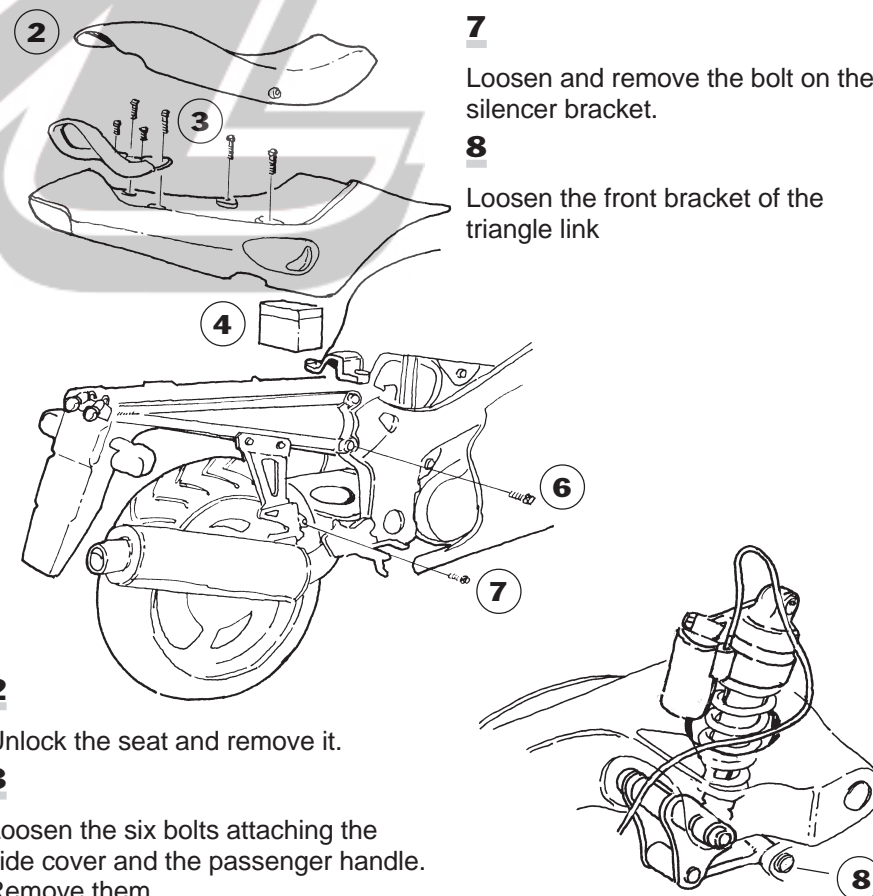
Mounting instructions

1

Put the motorcycle on a stand so the rear wheel is off the ground. Make sure it's steadily positioned and will not fall over.

⚠ WARNING!

1. It's advisable to have an Öhlins dealer or other qualified person to fit your shock absorber.
2. Instructions in the motorcycle workshop manual are to be followed when changing the shock absorber.
3. When working on the motorcycle it must be securely supported to prevent it from falling over.



NOTE!

Take out the two lampbulbs before removing the cover.

© Öhlins Racing AB.
All rights reserved.

Any reprinting or unauthorized use without the written permission of Öhlins Racing AB is prohibited.
Printed in Sweden.