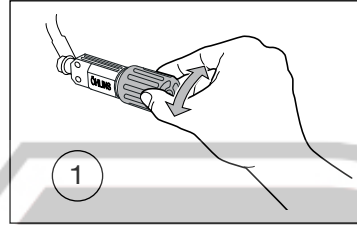


ADJUSTMENTS

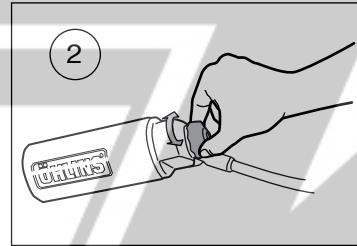
1 Spring Preload

Turn the hydraulic adjuster knob to set the spring preload. Turn clockwise to *increase* the preload and turn counter clockwise to *decrease*.



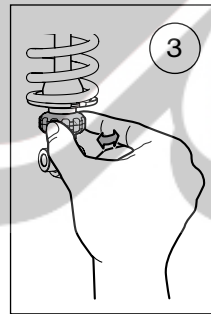
2 Compression Damping

Adjust by turning the knob on top of the reservoir. Turn clockwise to increase damping, turn counter clockwise to decrease.



3 Rebound Damping

Turn the wheel on the piston shaft above the end eye/ bracket. Turn clockwise to *increase* damping, turn counter clockwise to *decrease*.



NOTE!

When delivered the Öhlins shock absorber is dialed to the recommended settings for the specific vehicle model. If you have changed the setting, reset according to the following:

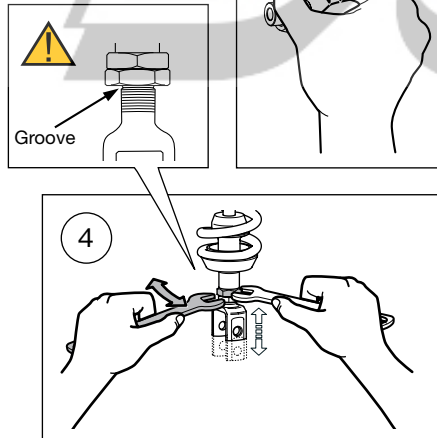
The adjuster has a right hand thread. Turn the adjuster clockwise to fully closed (pos. zero [0]). Turn counter clockwise to open and count the clicks until you reach the recommended number. See **Set-up Data**.

CAUTION!

Do not use force, delicate sealing surfaces can be damaged. Handtighten only.

4 Length Adjustment

We advise to remove the shock absorber from the vehicle before adjusting the length. Use two 24 mm wrenches. Hold the upper nut with one hand and at the same time loosen the lock nut (lower nut). Turn the end eye/bracket to the desired length. Tightening torque 40 Nm.



WARNING!

Remember to lock the lock nut after adjusting the length.

WARNING!

The adjustable end eye/bracket must not be threaded out more than that the groove is fully visible beneath the lock nut. This is maximum length. After adjusting, make sure that the lock nut is tightened.

Mounting Instructions

WITH SET-UP DATA

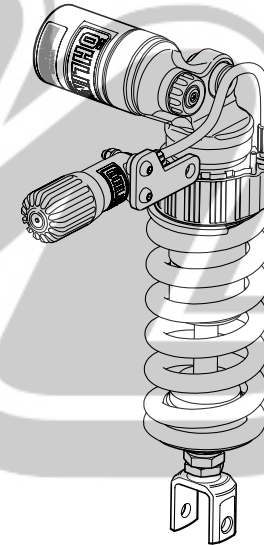
SHOCK ABSORBER SU717 for Suzuki Hayabusa

Before installing this shock absorber, check the contents of the kit listed below. If anything is missing, please contact your nearest Öhlins dealer.

Kit Contents:

	Part No.	Pcs.
Shock absorber	SU717	1
Tie wrap	00231-01	2
Screw M10x1.25	00439-02	1
Screw M8	01046-25	1
Öhlins Sticker	00192-01	2
Memo Notes Sticker	01180-01	1
Owner's Manual	07241-02	1

During storage and transportation, especially at high ambient temperature, some of the oil and grease used for assembling may leak and stain the packaging. This is in no way detrimental to the product, wipe off the excessive oil/grease with a cloth.



Set-up Data

Spring preload	15 mm
Rebound damping	14 clicks
Compression damping	12 clicks

Shock absorber length	330 ± 5 mm
Stroke	67.5 mm
Spring	01095-54 (140 N/mm)
Free spring length	180 mm

Before installing this product, read the Öhlins Owner's Manual!



HOW TO INSTALL

⚠ WARNING!

It is advisable to have an Öhlins dealer install the shock absorber.

1

Put the motorcycle on a workstand so that the rear wheel barely touches the ground.

⚠ WARNING!

Make sure the vehicle is securely supported so that it will not tip.

2

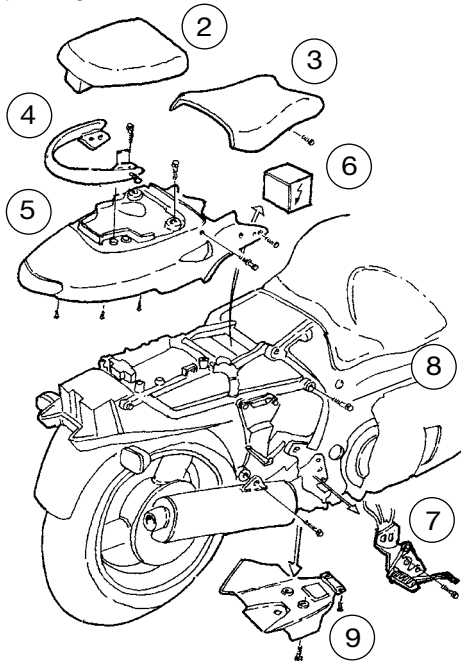
Open the rear seat lock and remove the seat.

3

Loosen the two bolts holding the front seat, remove it.

4

Remove the four bolts and loosen the passenger handle bar.



5

Loosen and remove the rear end cover by removing the six attachment bolts and the six plastic fasteners.

6

Remove the battery. Remove the bolt and attachment holding the electrical wires on the left side.

7

Loosen the right side foot rest bracket by removing the three bolts. Leave it hanging by the brake hose.

8

Loosen the rear frame bolts. Remove the lower bolts and raise the rear frame as far up as possible.

9

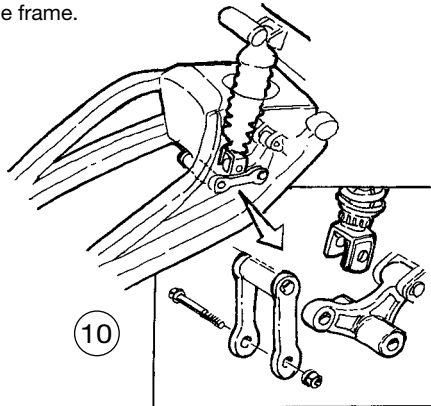
Loosen the lower cover plate under the swing.

NOTE!

Make sure that the brake reservoir or electrical wires do not restrict raising the rear frame.

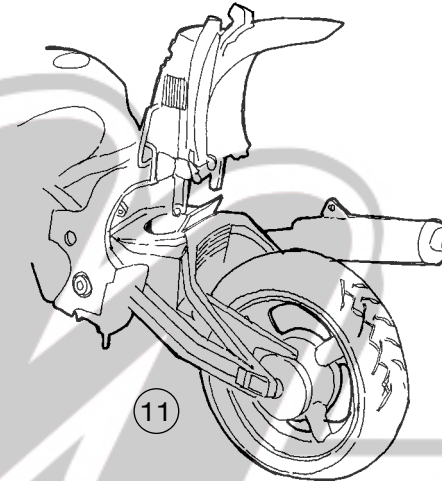
10

Loosen the triangle link from the rear swing attachment. Loosen the lower shock absorber bracket. Let the triangle link remain attached to the frame.



11

Loosen the upper shock absorber attachment and remove it from the top and out to the left side of the motorcycle.



NOTE!

Recommendation; Before installing the Öhlins shock absorber: Clean the vehicle thoroughly.

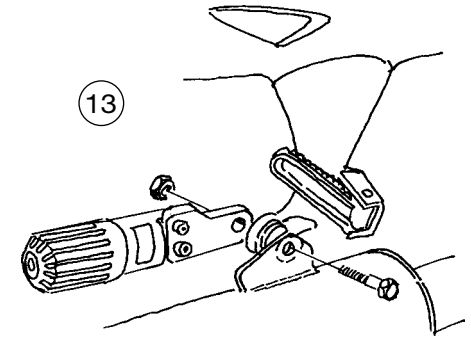
12

Install the Öhlins shock absorber from the left side, down into the rear swing. First, install the upper bracket, then attach it to the triangle link. Fasten the triangle link to the pull rods. Do not tighten yet.

13

Install the hydraulic preload adjuster to the silencer bracket with the screw (01046-25) provided. Fasten the hose with the tie wraps provided.

HOW TO INSTALL



NOTE!

Lower the motorcycle so that the shock absorber is slightly compressed, before tightening the screws.

14

Tighten the upper and the lower attachments of the shock absorber and the upper pull link attachment.

15

Reinstall all removed parts to the motorcycle.

NOTE!

Make sure that nothing interferes with the hose and the adjuster when the rear wheel suspension is fully extended/compressed.

⚠ WARNING!

Make sure that all screws are tightened to the correct torque and that nothing fouls or restricts movement of the shock absorber when the suspension is fully compressed or extended.