

Mounting Instruction

WITH SET-UP DATA

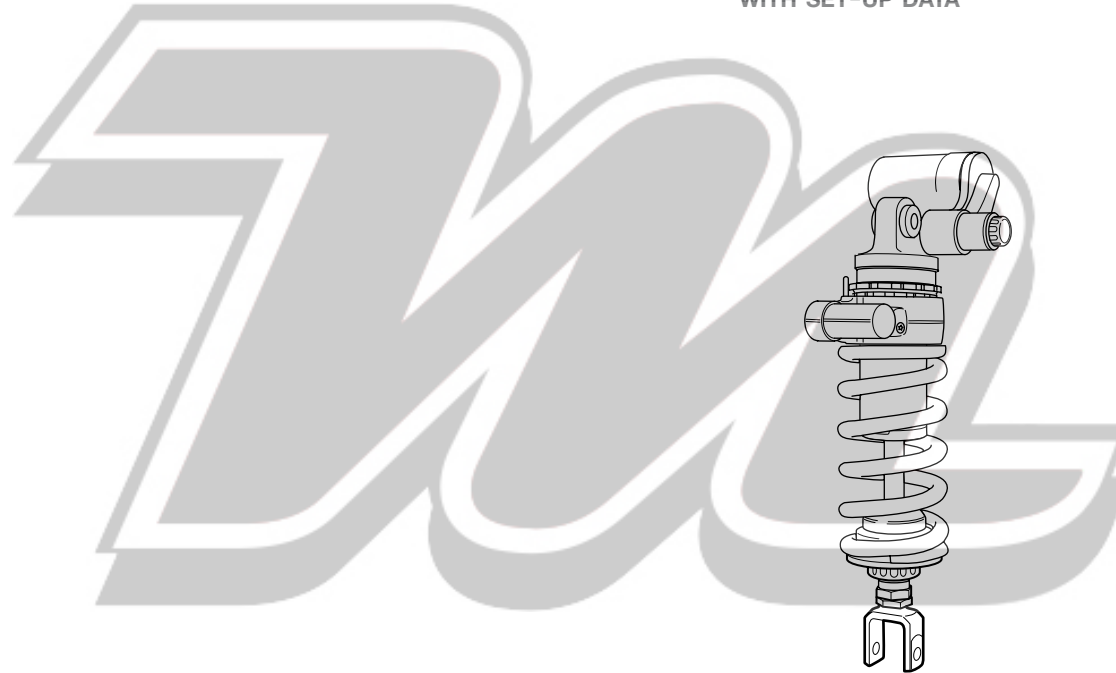
SHOCK ABSORBER SU716 for Suzuki B-King

Before installing this shock absorber, check the contents of the kit listed below. If anything is missing, please contact your nearest Öhlins dealer.

Kit Contents:

| | Part No. | Pcs. |
|--------------------|----------|------|
| Shock absorber | SU716 | 1 |
| Öhlins Sticker | 00192-01 | 2 |
| Memo Notes Sticker | 01180-01 | 1 |
| Owner's Manual | 07241-02 | 1 |

During storage and transportation, especially at high ambient temperature, some of the oil and grease used for assembling may leak and stain the packaging. This is in no way detrimental to the product, wipe off the excessive oil/grease with a cloth.



Set-up Data

| | |
|---------------------|-----------|
| Spring preload | 14 mm |
| Rebound damping | 18 clicks |
| Compression damping | 12 clicks |

| | |
|-----------------------|--------------------------------------|
| Shock absorber length | 321 ⁺¹² / ₀ mm |
| Stroke | 70.5 mm |
| Spring | 01092-34 (100 N/mm) |
| Free spring length | 170 mm |

Before installing this product, read the Öhlins Owner's Manual!



HOW TO INSTALL

⚠ WARNING!

It is advisable to have an Öhlins dealer install the shock absorber.

1

Put the motorcycle on a workstand so that the rear wheel barely touches the ground.

⚠ WARNING!

Make sure the vehicle is securely supported so that it will not tip.

2

Remove the lower fairing (below the suspension linkage).

3

Loosen the lower attachment of the original shock absorber and the upper attachment of the pull link. Leave the pull link hanging.

NOTE!

Remove the exhaust clamp bolt for better access.

4

Loosen the upper attachment of the original shock absorber and remove the original shock absorber downwards.

NOTE!

Recommendation: Before installing the Öhlins shock absorber:

- Clean the vehicle thoroughly
- Adjust the length of the shock absorber (check the headlight angle after adjusting the length!)

5

Install the Öhlins shock absorber in reverse order. Do not tighten yet.

NOTE!

Lower the motorcycle so that the shock absorber is slightly compressed, before tightening the screws.

6

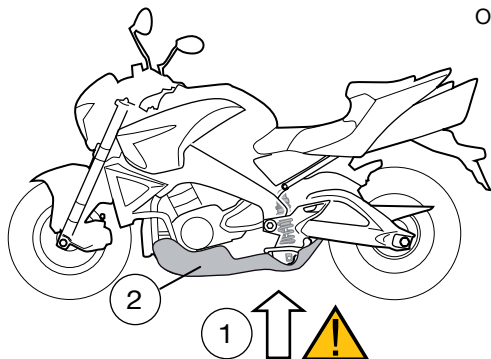
Tighten the upper and the lower attachments of the shock absorber and the upper pull link attachment.

⚠ WARNING!

Make sure that all screws are tightened to the correct torque and that nothing fouls or restricts movement of the shock absorber when the suspension is fully compressed or extended.

7

Make sure that all removed parts are reinstalled in their correct positions. Read more about the shock absorber and its settings in your Öhlins Owner's Manual.

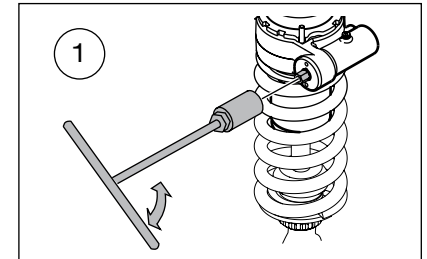


ADJUSTMENTS

Before riding, always ensure that the basic settings made by Öhlins are intact.

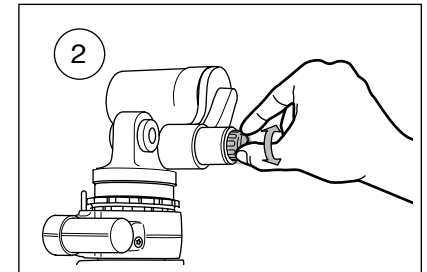
1 Spring Preload

Turn the hexagon screw on the hydraulic adjuster to set the spring preload. Turn clockwise to increase, turn counter clockwise to decrease.



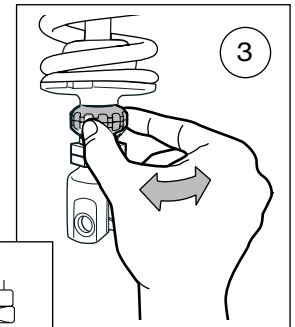
2 Compression Damping

Adjust by turning the knob on top of the reservoir. Turn clockwise to increase damping, turn counter clockwise to decrease.



3 Rebound Damping

Turn the wheel on the piston shaft above the end eye/ bracket. Turn clockwise to increase damping, turn counter clockwise to decrease.



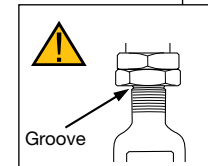
NOTE!

When delivered the Öhlins shock absorber is dialed to the recommended settings for the specific vehicle model. If you have changed the setting, reset according to the following:

The adjuster has a right hand thread. Turn the adjuster clockwise to fully closed (pos. zero [0]). Turn counter clockwise to open and count the clicks until you reach the recommended number. See **Set-up Data**.

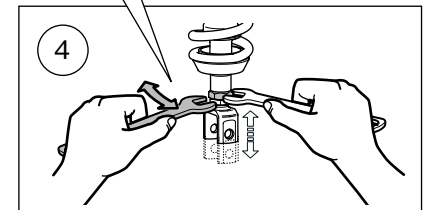
CAUTION!

Do not use force, delicate sealing surfaces can be damaged. Handtighten only.



4 Length Adjustment

We advise to remove the shock absorber from the vehicle before adjusting the length. Use two 24 mm wrenches. Hold the upper nut with one hand and at the same time loosen the lock nut (lower nut). Turn the end eye/bracket to the desired length. Tightening torque 40 Nm.



⚠ WARNING!

The adjustable end eye/bracket must not be threaded out more than that the groove is fully visible beneath the lock nut. This is maximum length.

⚠ WARNING!

Remember to lock the lock nut after adjusting the length.