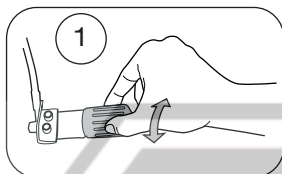


## ADJUSTMENTS

Always ensure that the basic settings made by Öhlins are intact.

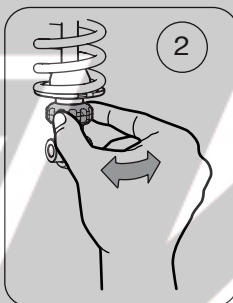
### 1 Spring Preload

Turn the knob on the hydraulic preload adjuster to set the spring preload. Turn clockwise to increase the preload, turn counter clockwise to decrease it.



### 2 Rebound

Turn the wheel on the piston shaft above the end eye/bracket. Turn clockwise to increase damping, turn counter clockwise to decrease.



### NOTE!

When delivered the Öhlins shock absorber is dialed to the recommended settings for the specific vehicle model. If you have changed the setting, reset according to the following:

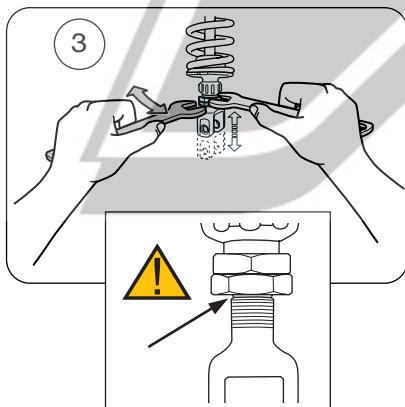
The adjuster has a right hand thread. Turn the adjuster clockwise to fully closed (pos. zero [0]). Turn counter clockwise to open and count the clicks until you reach the recommended number (see Set-up Data).

### CAUTION!

Do not use force, delicate sealing surfaces can be damaged. Handtighten only.

### 3 Length

We recommend you to adjust the length before installing the shock absorber to the vehicle. Use two wrenches. Hold the upper nut with one hand and at the same time loosen the lock nut (lower nut). Turn the end eye/ bracket to the desired length. Lock the lock nut. Tightening torque: 40 Nm



### WARNING!

The adjustable end eye/bracket must not be threaded out more than that the groove is fully visible beneath the lock nut. This is maximum length. After adjusting, make sure that the lock nut is tightened.

## Mounting Instructions

WITH SET-UP DATA

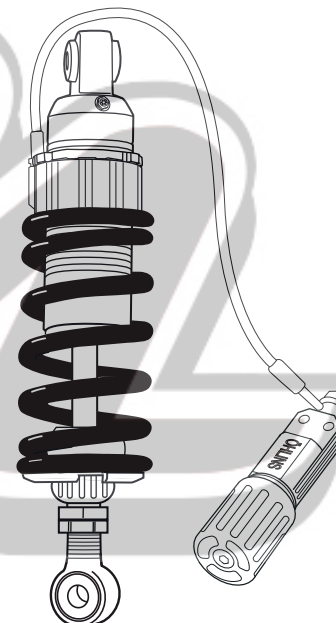
### SHOCK ABSORBER SU713 for Suzuki M1800R

Before installing this shock absorber, check the contents of the kit listed below. If anything is missing, please contact your nearest Öhlins dealer.

#### Kit Contents:

	Part no.	Pcs.
Shock absorber	SU713	1
Bracket	20029-01	1
Screw MC6S	01046-01	2
Öhlins Sticker black	00191-13	2
Öhlins Sticker white	00191-20	2
Memo Notes Sticker	01180-01	1
Owner's Manual	07241-02	1

During storage and transportation, especially at high ambient temperature, some of the oil and grease used for assembling may leak and stain the packaging. This is in no way detrimental to the product, wipe off the excessive oil/grease with a cloth.

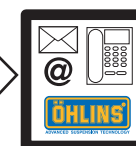


#### Set-up Data

Spring preload	11 mm
Rebound damping	20 clicks

Shock absorber length	332,5 <sup>+0</sup> <sub>-12</sub> mm
Stroke	47,5 mm
Spring	21016-74
Free spring length	160 <sup>+0</sup> <sub>-3</sub>

Before installing this product, read the Öhlins Owner's Manual!



## HOW TO INSTALL

### ⚠ WARNING!

It is advisable to have an Öhlins dealer install the shock absorber.

**1**

Put the motorcycle on a workstand so that the rear wheel barely touches the ground.

### ⚠ WARNING!

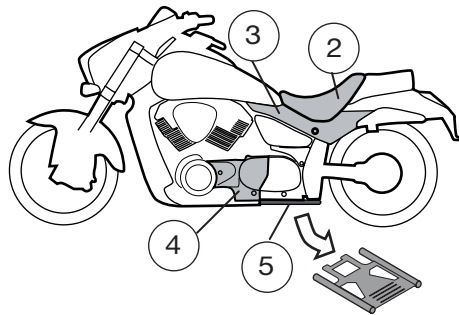
Make sure the vehicle is securely supported so that it will not tip.

**2**

Remove the seat.

**3**

Remove the side cover on the left side.



**4**

Remove the left side engine cover.

**5**

Remove the skid plate under the engine.

**6**

Remove first the rear and then the front attachment of the original shock absorber. Remove the original shock absorber downwards.

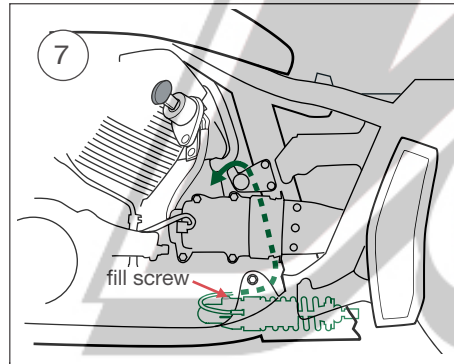
### NOTE!

Recommendation! Before installing the Öhlins shock absorber:

- clean the vehicle thoroughly
- adjust the length of the shock absorber (check the headlight angle after adjusting the length!)

**7**

Install the Öhlins shock absorber, but do not tighten yet. Make sure the shock absorber fill screw is at the front and pointing up. Lead the hose in a soft bend between the rear engine attachment and the frame, see figure.

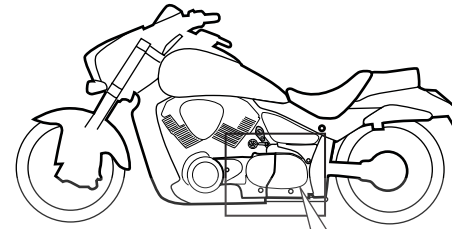


### NOTE!

Lower the motorcycle so that the shock absorber is slightly compressed, before tightening the screws.

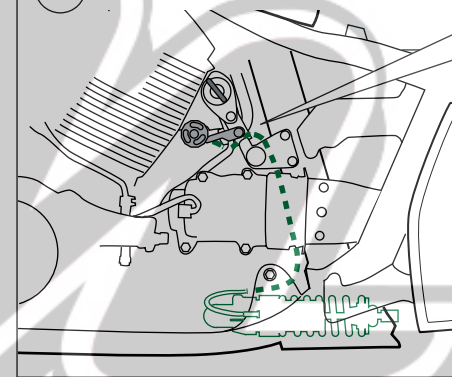
**8**

Tighten the screws of the front and the rear shock absorber attachments.



**9**

View from the left side of the vehicle



**9**

Guide the hose so that the preload adjuster is located just beneath the ignition key, and pointing to the left.

### ⚠ WARNING!

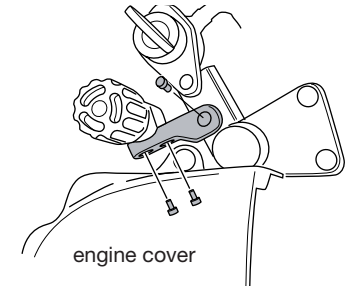
Make sure that the hydraulic preload adjuster hose runs in soft bends. Also check that it does not come in contact with the exhaust pipe or any sharp edges.

**10**

Attach the bracket, provided together with screws in this kit, to the preload adjuster. Loosen the ignition lock bracket and install the preload adjuster bracket between the screw head and the ignition lock bracket. Tighten the screw.

**10**

Close-up view from the left side of the vehicle



Correct installing of bracket to hydraulic preload adjuster

**11**

Reattach the left side engine cover.

### NOTE!

Make sure that the distance between the engine cover and the hydraulic preload adjuster is big enough so that you can adjust the preload.

**12**

Reattach the skid plate, side cover and seat. Make sure that all removed parts are installed in the same way as they were before the installation.

### NOTE!

Make sure that all screws are tightened to the correct torque and that nothing fouls or restricts movement of the shock absorber when the suspension is fully compressed or extended.