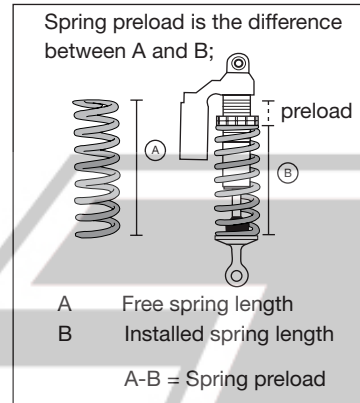


ADJUSTMENTS

1 Spring preload

Loosen the screw of the spring platform clamp. Use the C-spanner provided in this kit, turn the spring platform to the desired position. Or, when installed on the vehicle, turn the spring. Tighten the screw of the spring platform clamp.



2 Compression damping

Adjust on top of the reservoir.
Low speed: Turn the slotted centre screw
High speed: Turn the hexagon screw
Turn clockwise to increase damping, turn counter clockwise to decrease.

3 Rebound damping

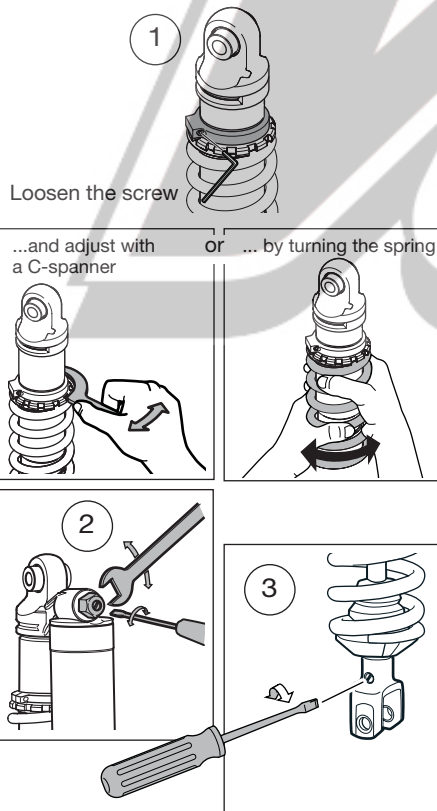
Adjust by turning the screw on the bracket.

⚠ WARNING!

When delivered, the Öhlins shock absorber is dialed to the recommended settings for the specific brand and make of the motorcycle. Before riding, always ensure that the basic settings made by Öhlins are intact.

To set the adjuster:
The turn adjusters have a normal right hand thread. Turn the damping adjusters clockwise to fully closed (position zero [0]). Then, turn counter clockwise to open, and count the clicks until you reach the recommended number of clicks. See Set-up data.

Do not use force, delicate sealing surfaces can be damaged. Handtighten only.



Mounting Instructions

WITH SET-UP DATA

SHOCK ABSORBER KT792 for KTM 250 SX 2007

Before installing this product, check the contents of the kit listed below. If anything is missing, please contact your nearest Öhlins dealer.

| Kit Contents: | Part no. | Pcs. |
|-----------------------|----------|------|
| Shock absorber | KT792 | 1 |
| Spring clip | 00629-05 | 1 |
| C-spanner single | 00710-02 | 1 |
| Öhlins Sticker | 00197-01 | 2 |
| Memo Notes Sticker | 01180-01 | 1 |
| Öhlins Owner's Manual | | 1 |

NOTE!

No spring included in this kit. See the Spring Guide in this folder, or contact an Öhlins dealer for advice.

During storage and transportation, especially at high ambient temperature, some of the oil and grease used for assembling may leak and stain the packaging. This is in no way detrimental to the product, wipe off the excessive oil/grease with a cloth.

Set-up data

| | |
|---------------------|----------------|
| Spring preload | 5 turns (8 mm) |
| Rebound damping | 18 clicks |
| Compression damping | |
| Low speed | 15 clicks |
| High speed | 2 turns |

Shock absorber data

| | |
|--------|----------|
| Length | 411.5 mm |
| Stroke | 110.5 mm |

Free sag and Ride height

| | |
|--------------------|------------|
| Free sag, rear | 30±5 mm |
| Free sag, front | 30±5 mm |
| Ride height, rear | 107-112 mm |
| Ride height, front | 80±5 mm |

Read the Öhlins Owner's Manual before installing this product



SPRING GUIDE

| Brand | Rider's weight | Spring | Spring rate | Titanium spring |
|------------|----------------|----------|-------------|-----------------|
| | kg/pounds | N/mm | | |
| KTM 250 SX | 65/143 | 06320-14 | 60 | |
| | 70/154 | 06320-15 | 62 | |
| | 75/165 | 06320-16 | 64 | 06360-16 |
| | 80/176 | 06320-17 | 66 | 06360-17 |
| | 85/187 | 06320-18 | 68 | 06360-18 |
| | 90/198 | 06320-19 | 70 | 06360-19 |

INSTALL THE SPRING

NOTE!

Install the spring to the shock absorber before installing the shock absorber on the vehicle.

1

Measure the free length of the spring (A).

2

Loosen the screw on the spring platform clamp so that you can move the spring platform as far up as needed to install the spring.

3

Put the shock absorber up-side-down in a vice so that you can install the spring and the spring clip.

NOTE!

The spring platform and spring are press fitted. Push hard to install the spring.

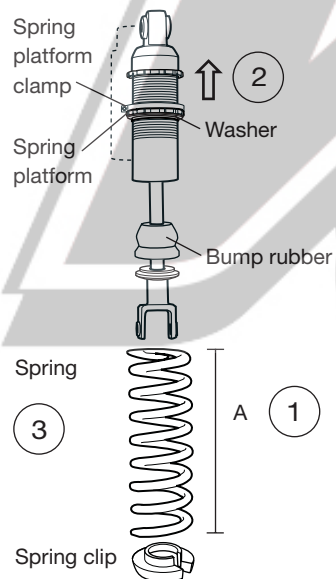
4

Measure the spring length. Adjust the spring preload to the recommended setting, see section *Adjustments* and *Set-up data* in this folder.

5

Install the shock absorber to the vehicle according to the procedure in this folder.

Check sag and ride height (see the Owner's Manual) and adjust the spring preload again if necessary.



NOTE!

Tighten the screw on the spring platform clamp before riding the motorcycle.

INSTALL THE SHOCK ABSORBER

WARNING!

It is advisable to have an Öhlins dealer install the shock absorber.

1

Raise the rear end of the vehicle so that the rear wheel barely touches the ground.

WARNING!

Make sure the vehicle is securely supported so that it will not tip.

2

Loosen the lower and the upper attachment of the original shock absorber. Remove it backwards and out to the right.

3

Install the Öhlins shock absorber in the same way as the original unit. Fasten it by using the two original screws, but do not tighten yet.

NOTE!

Put the motorcycle back on the floor before tightening the screws. Make sure the vehicle is secure and will not tip. You may need an assistant for this procedure.

4

Tighten the upper and the lower attachments. Make sure that all removed parts are installed in the same way as they were before the installation.

WARNING!

Make sure that all screws are tightened to the correct torque and that nothing fouls or restricts movement of the shock absorber when the suspension is fully compressed or extended.

