

NOTE!

Make sure the attachment bolts are tightened to the correct torque and that nothing fouls the shock absorber when the suspension is being fully compressed or extended. See the motorcycle's workshop manual for the correct readings.

11

Fit the rebound adjustment knob with the small Philips screw.

12

Remove the horn and the horn bracket. Position the horn on the inside of the bracket, and reposition the bracket downwards, frontwards.

13

Attach a tie rap to the front brake hose and together with the choke cable and the electrical wiring. The tie rap don't need to be tightened, it's task is to create space between the brake hose and the piggyback reservoir.

Notes

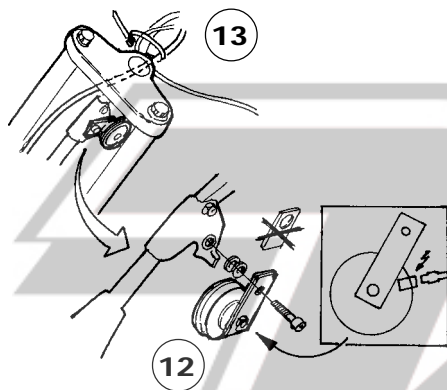
Traction, handling,
comfort and safety



Öhlins Racing AB, Box 722, S-194 27 Upplands Väsby, Sweden.
Phone +46 8 590 025 00, fax +46 8 590 025 80.

14

Continue your work according to the Owner's Manual, section adjustments.



WARNING!

Certain modifications are necessary to install the Öhlins shock absorber. It is vital that the mounting instructions are carefully followed.

Mounting instructions

BM 842 - BMW R 1100 S

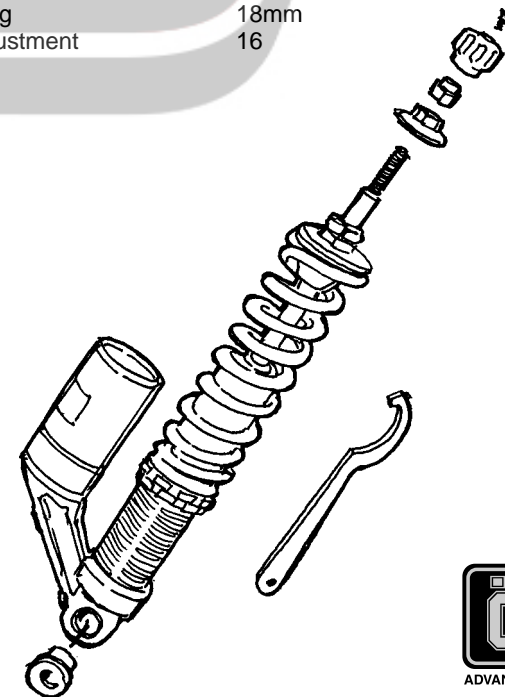
Front shock absorber

Kit contents

Shock absorber Type 36PR	BM 842	
Flange nut	03174-01	1
Nut (blue)	03175-01	1
Washer	00153-01	2
Spacer	03178-01	2
Rebound adjustment knob	03177-01	1
Philips screw	00828-01	1
Bolt MC6S 8x30	01046-30	1
Sticker Öhlins	00192-01	2
C-spanner twin	00710-01	1
Owners manual		1
Sticker Memo Notes	01180-01	1
Tie rap L=188	00231-01	1

Set-up data

Length	318 mm
Stroke	70 mm
Preload spring	18mm
Rebound adjustment	16



BM 842, ISSUED 99 03 05



Safety signals

Important information concerning safety is distinguished in this manual by the following notations



The Beware sign means:
Pay attention!
Your safety is at risk.

⚠ WARNING!

Failure to follow Warning text could result in **serious or fatal injury** to anyone working with, inspecting or using the suspension, or to bystanders.

CAUTION!

Caution indicates special precautions that must be taken to avoid damage to the suspension.

NOTE!

This indicates information that is of importance with regard to procedures

Kit contents

Before installing the shock absorber kit, please check the contents, listed on the front page of this instruction. If anything is missing, contact your Öhlins dealer.

NOTE!

During storage and transportation, especially at high ambient temperature, the oil and grease used for assembling may run out inside the packing and damage the expanded polystyrene packing material. This is not unusual and is in no way detrimental to the shock absorber.

Before you start

⚠ WARNING!

Installing a shock absorber, that is not approved by the motorcycle manufacturer, may affect the stability of your motorcycle. Öhlins Racing AB can't be held responsible for any personal injury or damage whatsoever which may occur after fitting the shock absorber.

Öhlins Racing AB can not be held responsible for any damage whatsoever to spare parts, or injury to persons, if the instructions for servicing and maintenance are not followed exactly. Similarly, the guarantees relating to performance and reliability will become null and void if the instructions are not adhered to.

⚠ WARNING!

Please study the mounting instructions and the owner's and workshop manuals thoroughly before handling this shock absorber kit.

⚠ WARNING!

When installing the Öhlins shock absorber the motorcycle workshop manual must be at hand.

NOTE!

Öhlins products are subject to continual improvement and development in design and quality. Consequently, although these instructions include the most up-to-date information available at the time of printing, there may be minor differences between your suspension and this manual. Please consult your Öhlins dealer if you have any questions concerning the manual.

Mounting instructions

1

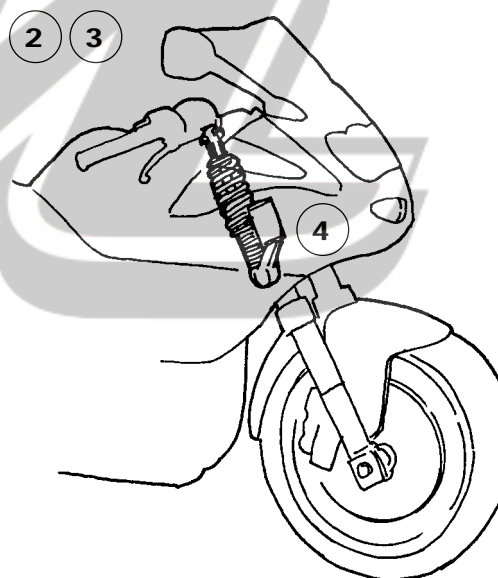
The motorcycle must be positioned in a way so the front wheel is clear off the ground. This must be done in a way so that the motorcycle stands steady and not will fall over.

⚠ WARNING!

This can be hazardous and should be performed by a professional workshop

2

Loosen the rebound adjustment, on the upper side of the gasoline tank. Use a 14 mm wrench..



3

Loosen the upper attachment nut by using a 15 mm wrench and an allen key to hold the shaft.

4

Loosen the lower bracket of the shock absorber.

5

Remove the upper half of the rubber bushing from the upper bracket of the shock absorber

6

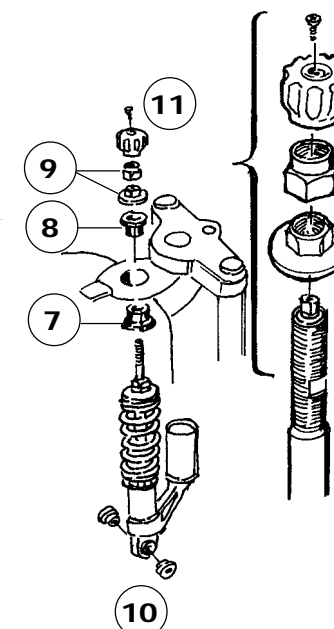
Pull out the shock absorber downwards and then forwards

7

Fit the rubber bushings from the original shock absorber to the Öhlins shock absorber. Fit the Öhlins shock absorber the same way, the upper end through the bracket in the gasoline tank.

8

Refit the upper rubber bushing.



9

Attach the upper end of the shock absorber by using the two nuts provided. Fit first the flange nut and washer, then the blue nut. Fit a wrench to the flat surfaces of the shaft, so it not rotates.

10

Attach the lower end of the Öhlins shock absorber.

© Öhlins Racing AB.
All rights reserved.

Any reprinting or unauthorized use without the written permission of Öhlins Racing AB is prohibited.
Printed in Sweden.