



## Racing Line (Carbon)

Product code: **S-S10R10-RC**

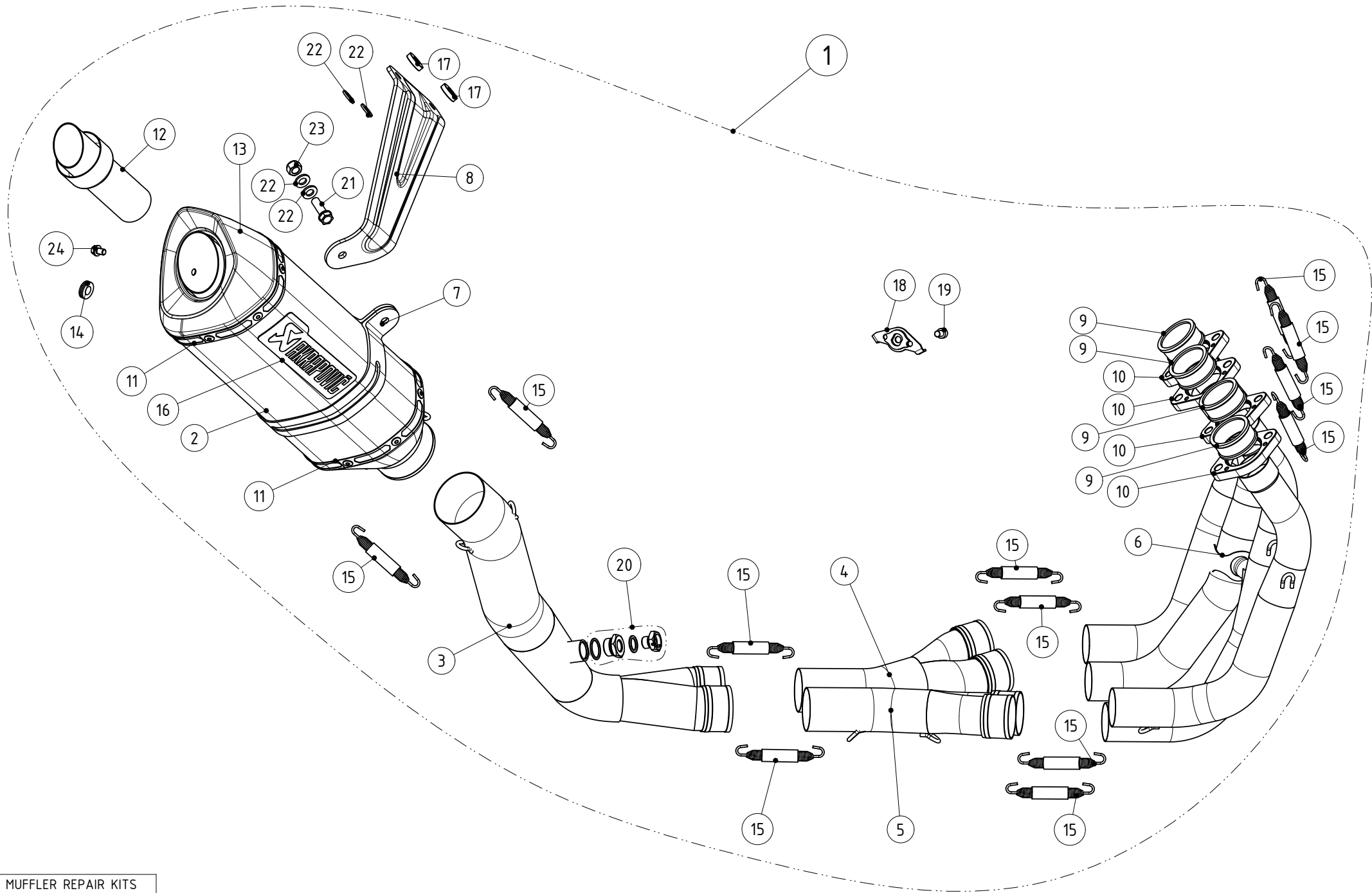
MSRP ex. VAT:

Akrapovič Racing systems are designed for riders who demand maximum performance from their motorcycle. Systems are significantly lighter if compared to stock exhaust system and feature exceptional production quality, hi-tech materials and of course increased engine performance combined with pure racing sound output. Racing system uses stainless steel header tubes and link pipe.

<b>TECHNICAL DATA</b>	<b>UNIT</b>	<b>STOCK</b>	<b>AKRAPOVIČ</b>	<b>MAX. GAIN</b>
maximum power	kW	125.2 at 11750 rpm	133 at 12650 rpm	+ 11.5 at 12650 rpm
	HP (m)	170.2 at 11750 rpm	180.8 at 12650 rpm	+ 15.7 at 12650 rpm
	HP (i)	167.9 at 11750 rpm	178.3 at 12650 rpm	+ 15.5 at 12650 rpm
maximum torque	Nm	111.5 at 10200 rpm	115.3 at 10200 rpm	+ 7.1 at 7050 rpm
	lb-ft	82.2 at 10200 rpm	85 at 10200 rpm	+ 5.2 at 7050 rpm
weight	kg	8	5.4	- 2.6
	lb	17.6	17.6	- 5.7
static noise level	dB	96	101.4	+ 5.4

	<b>rpm</b>	<b>5750</b>	<b>5750</b>	<b>0</b>
--	------------	-------------	-------------	----------

measured with: Suzuki GSX-R 1000 2012



MUFFLER REPAIR KITS	
REPACK	25
CA SLEEVE	26
Ti SLEEVE	27

No.	SALES CODE	DESCRIPTION	QTY.
1	S-S10R10-RC	S SU GSX-R1000 RAC 12 HSCSLs MTCC	1
2	M-R03205C	M SA T60R1 C300/57 C59R7	1
3	L-S10R9	LP SS 2×D45/48/60 LAM SU GSX-R1 R SIN 09	1
4	C-S10R7/1L	CO SS 2×42,3/45 L SU GSX-R1000 R 09-12	1
5	C-S10R7/1D	CO SS 2×42,3/45 D SU GSX-R1000 R 09-12	1
6	H-S10R7	HE SS 4×D35/42 SET POV SU GSX-R1 R 09-11	1
7	P-MCCR10	MC CA R CA 6/8,5/95/32 CR10	1
8	P-MBS10R5R	MB CA SU GSX-R1000 09-11 D	1
9	P-FS13	prirob. AL D38,8/61 SU 1300 FS13	4
10	P-75	puša gl. SS D38/45,5×20 GSX-R1 7,09 P-75	4
11	P-TT20	trak zak. TI L=414,5 S=16 R CA TT20	2
12	V-TUV109	vložek ses. HOM SS D40/78/53/59° D	1
13	V-EC174	SRO zad. CA R7 CA za SU GSX-R1 SO,E,R 12	1
14	P-GUV004	gumi vložek D18 nased-D13 logotip	1
15	P-S1	vzmet SS D10×80 Tip1 z zašč. gumo S1	6
16	P-HST2AL	nalepka Akrap. HOR 150 AL	1
17	P-DR2	puša dis. AL D8,5/20×5 ELOX	2
18	P-X105	nosi. SS spec. GSX-R1/12 ses. exup	1
19	P-FB48	vijak torx FE M5×16 ISO14580 CC	1
20	P-HF284	montažni set lambde M18 na M12	1
21	P-FB18	vijak šest. prirob M8×30 S=12 SC P-FB18	1
22	P-DR4	podložka SS D8,5/D24×2 ISO7093	4
23	P-FN4	matica šestr. prirob FE M8 SC DIN 6923	1
24	P-FB56	vijak šest. prirob SS M6×6 S=8 imb S=4	1
25	P-RPCK48	MMRCK tip 48	1
26	P-RKS328RC30	MRRSK tip 328 CR30 C300R	1



## Racing Line (Titanium)

Product code: **S-S10R10-RT**

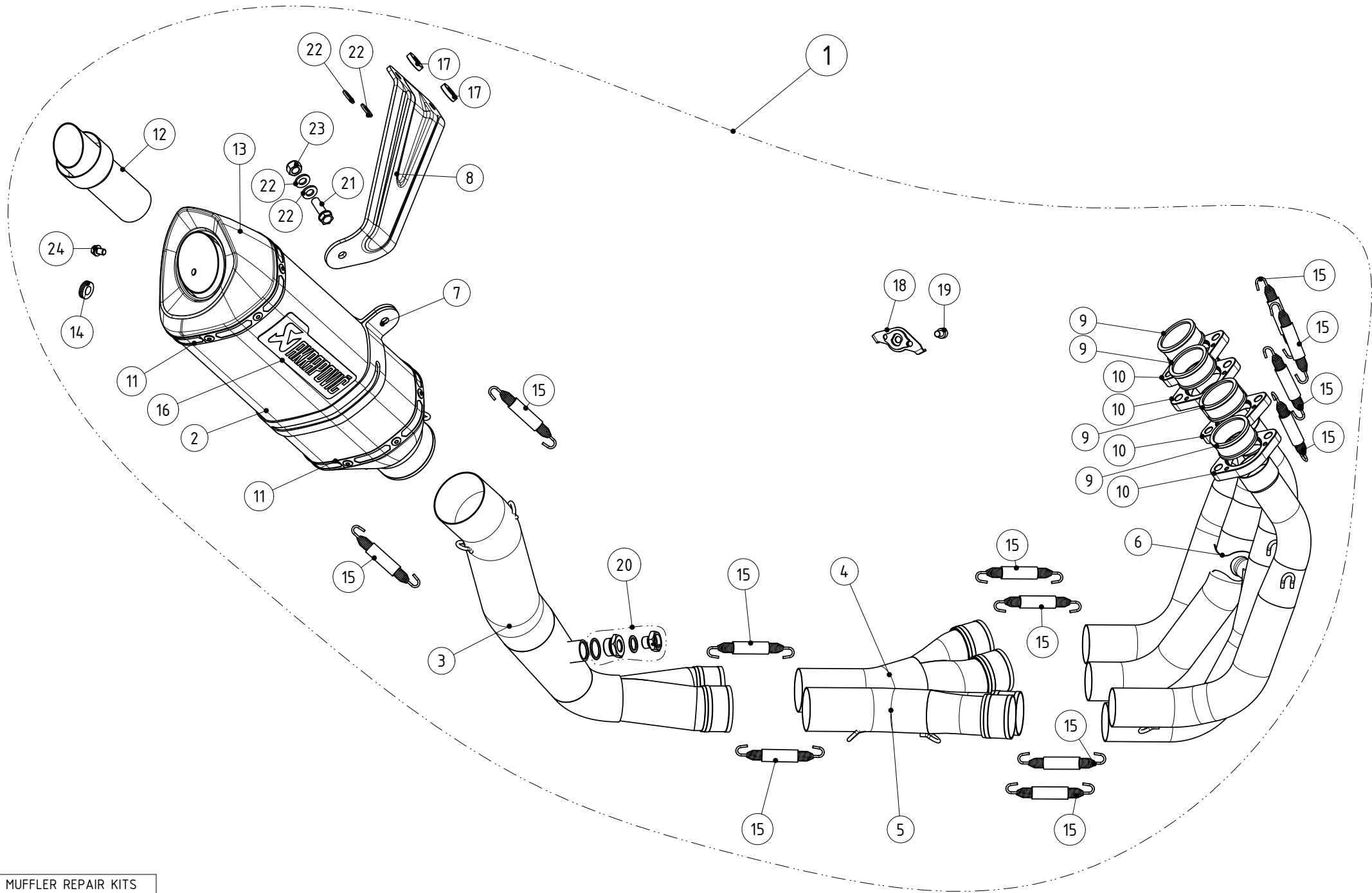
MSRP ex. VAT:

Akrapovič Racing systems are designed for riders who demand maximum performance from their motorcycle. Systems are significantly lighter if compared to stock exhaust system and feature exceptional production quality, hi-tech materials and of course increased engine performance combined with pure racing sound output. Racing system uses stainless steel header tubes and link pipe.

<b>TECHNICAL DATA</b>	<b>UNIT</b>	<b>STOCK</b>	<b>AKRAPOVIČ</b>	<b>MAX. GAIN</b>
maximum power	kW	125.2 at 11750 rpm	133 at 12650 rpm	+ 11.5 at 12650 rpm
	HP (m)	170.2 at 11750 rpm	180.8 at 12650 rpm	+ 15.7 at 12650 rpm
	HP (i)	167.9 at 11750 rpm	178.3 at 12650 rpm	+ 15.5 at 12650 rpm
maximum torque	Nm	111.5 at 10200 rpm	115.3 at 10200 rpm	+ 7.1 at 7050 rpm
	lb-ft	82.2 at 10200 rpm	85 at 10200 rpm	+ 5.2 at 7050 rpm
weight	kg	8	5.4	- 2.6
	lb	17.6	17.6	- 5.7
static noise level	dB	96	101.4	+ 5.4

	<b>rpm</b>	<b>5750</b>	<b>5750</b>	<b>0</b>
--	------------	-------------	-------------	----------

measured with: Suzuki GSX-R 1000 2012



MUFFLER REPAIR KITS	
REPACK	25
CA SLEEVE	26
Ti SLEEVE	27

No.	SALES CODE	DESCRIPTION	QTY.
1	S-S10R10-RT	S SU GSX-R1000 RAC 12 HSCSL S MTTC	1
2	M-R03205T	M SA T60R1 T300/57 C59R7	1
3	L-S10R9	LP SS 2×D45/48/60 LAM SU GSX-R1 R SIN 09	1
4	C-S10R7/1L	CO SS 2×42,3/45 L SU GSX-R1000 R 09-12	1
5	C-S10R7/1D	CO SS 2×42,3/45 D SU GSX-R1000 R 09-12	1
6	H-S10R7	HE SS 4×D35/42 SET POV SU GSX-R1 R 09-11	1
7	P-MCTR10	MC CA R TI 6/8,5/95/32 TR10	1
8	P-MBS10R5R	MB CA SU GSX-R1000 09-11 D	1
9	P-FS13	prirob. AL D38,8/61 SU 1300 FS13	4
10	P-75	puša gl. SS D38/45,5×20 GSX-R1 7,09 P-75	4
11	P-TT13	trak zak. TI L=410 S=16 R TI TT13	2
12	V-TUV109	vložek ses. HOM SS D40/78/53/59° D	1
13	V-EC175	SRO zad. CA R7 TI za SU GSX-R1 SO,E,R 12	1
14	P-GUV004	gumi vložek D18 nased-D13 logotip	1
15	P-S1	vzmet SS D10×80 Tip1 z zašč. gumo S1	1
16	P-HST2AL	nalepka Akrap. HOR 150 AL	1
17	P-DR2	puša dis. AL D8,5/20×5 ELOX	2
18	P-X105	nosi. SS spec. GSX-R1/12 ses. exup	1
19	P-FB48	vijak torx FE M5×16 ISO14580 CC	1
20	P-HF284	montažni set lambde M18 na M12	1
21	P-FB18	vijak šest. prirob M8×30 S=12 SC P-FB18	1
22	P-DR4	podložka SS D8,5/D24×2 ISO7093	4
23	P-FN4	matica šestr. prirob FE M8 SC DIN 6923	1
24	P-FB56	vijak šest. prirob SS M6×6 S=8 imb S=4	1
25	P-RPCK48	MMRCK tip 48	1
26	P-RKS327RT30	MRRSK tip 327 TR30 T300R	1