



## Racing Line (Carbon)

Product code: **S-S10R10-RC/1**

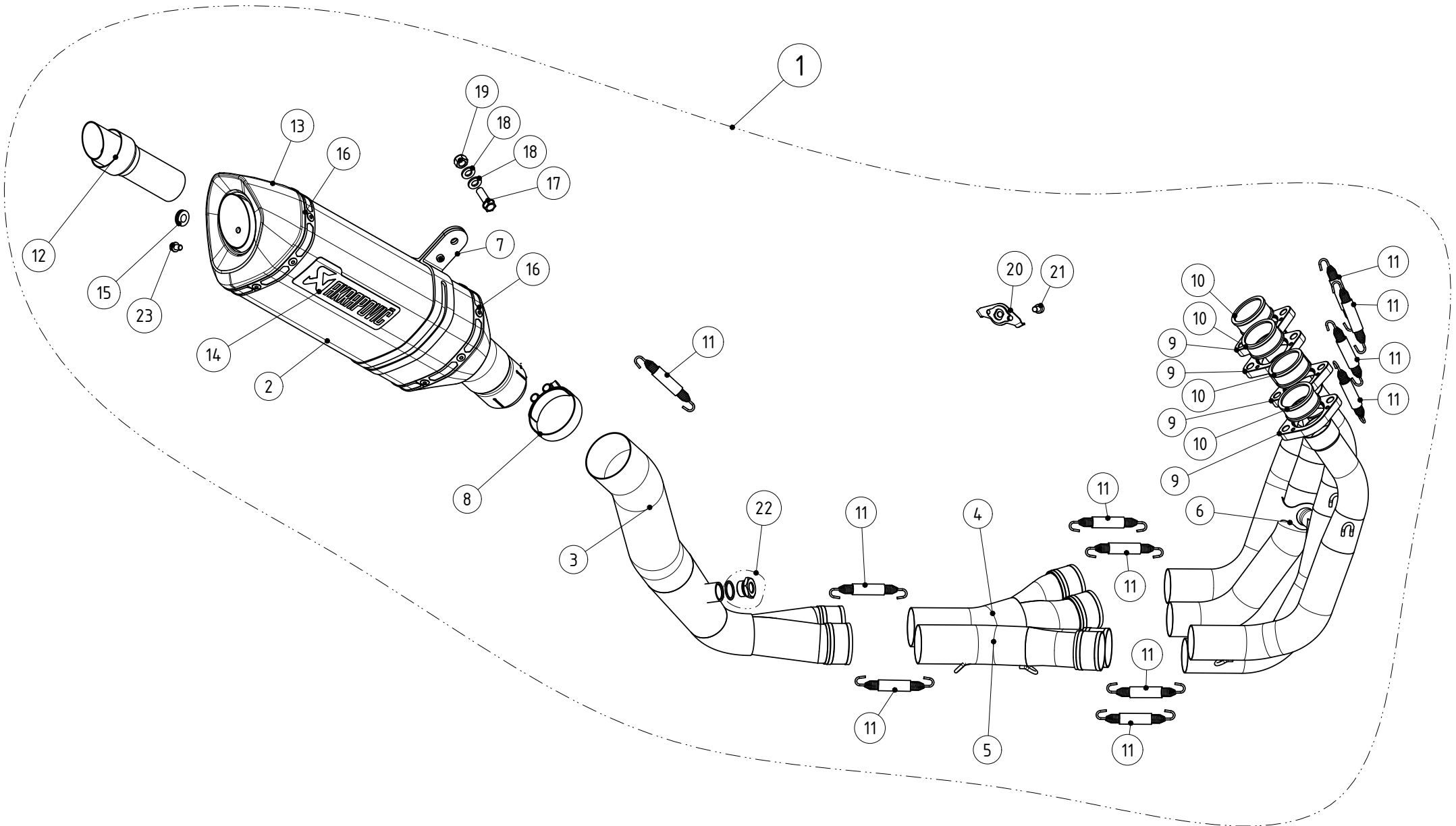
MSRP ex. VAT:

**Alternative combination of matching components to suit specific visual or performance needs  
Racing headers and with EC type approved Slip-on silencer .**

<b>TECHNICAL DATA</b>	<b>UNIT</b>	<b>STOCK</b>	<b>AKRAPOVIČ</b>	<b>MAX. GAIN</b>
maximum power	kW	125.2 at 11750 rpm	132.8 at 12450 rpm	+ 10.3 at 12500 rpm
	HP (m)	170.2 at 11750 rpm	180.6 at 12450 rpm	+ 14 at 12500 rpm
	HP (i)	167.9 at 11750 rpm	178.1 at 12450 rpm	+ 13.8 at 12500 rpm
maximum torque	Nm	111.5 at 10200 rpm	114.6 at 10150 rpm	+ 6.4 at 7050 rpm
	lb-ft	82.2 at 10200 rpm	84.5 at 10150 rpm	+ 4.7 at 7050 rpm
weight	kg	8	4.5	- 3.5
	lb	17.6	17.6	- 7.7
static noise level	dB	96	101.2	+ 5.2
	rpm	5750	5750	0

measured with: Suzuki GSX-R 1000 2012

**WARNING! IN CASE OF COMBINATION WITH RACING LINE TUBE SET, MUFFLER EC TYPE APPROVAL IS NOT VALID!**



MUFFLER REPAIR KITS	
REPACK	24
SLEEVE	25

No.	SALES CODE	DESCRIPTION	QTY.
1	S-S10R10-RC/1	S SU GSX-R1000 RAC 12 HSCSL S HSO MTCC	1
2	M-HR03205C	M HR032 T58R1 C300/57 C59R7	1
3	L-S10R10	LP SS 2×D45/48/56 LAM SU GSX-R1000 12	1
4	C-S10R7/1L	CO SS 2×42,3/45 L SU GSX-R1000 R 09-12	1
5	C-S10R7/1D	CO SS 2×42,3/45 D SU GSX-R1000 R 09-12	1
6	H-S10R7	HE SS 4×D35/42 SET POV SU GSX-R1 R 09-11	1
7	P-MCCR26	MC CA R CA 25/8,5/108/32 CR26X	1
8	P-R20	objemka SS D59×16 M6×30	1
9	P-FS13	prirob. AL D38,8/61 SU 1300 FS13	4
10	P-75	puša gl. SS D38/45,5×20 GSX-R1 7,09 P-75	4
11	P-S1	vzmet SS D10×80 Tip1 z zašč. gumo S1	6
12	V-TUV081	vložek ses. HOM SS D38/78/53/59°	1
13	V-EC174	SRO zad. CA R7 CA za SU GSX-R1 SO,E,R 12	1
14	P-HST2AL	nalepka Akrap. HOR 150 AL	1
15	P-GUV004	gumi vložek D18 nased-D13 logotip	1
16	P-TT20	trak zak. TI L=414,5 S=16 R CA TT20	2
17	P-FB23	vijak šest. prirob FE M8×45 SC	1
18	P-DR4	podložka SS D8,5/D24×2 ISO7093	2
19	P-FN4	matica šestr. prirob FE M8 SC DIN 6923	1
20	P-X105	nosi. SS spec. GSX-R1/12 ses. exup	1
21	P-FB48	vijak torx FE M5×16 ISO14580 CC	1
22	P-HF661	cep lambde SS S22×M18×1,5/S22×M12+tesnil	1
23	P-FB28	vijak imb. leca SS M6×8 ISO7380 FB28	1
24	P-RPCK48	MMRCK tip 48	1
25	P-RKS328RC30	MRRSK tip 328 CR30 C300R	1