



Kawasaki ZX-6 R (2007)

Racing / Evolution Exhaust System

Akrapovic Racing / Evolution Exhaust System

for the Kawasaki ZX-6 R (2007)

The Akrapovic RACING and EVOLUTION systems fit perfectly with the Super-sport performance and styling of the Kawasaki ZX 6-R. For the EVOLUTION we use titanium, for the RACING stainless steel. We use the Hydroforming process to shape the header tubes for both systems, by which we ensure the optimal tube shape for the exhaust gas flow. These systems are designed for people who expect the maximum from their exhaust systems and know how to squeeze every bit of advantage out of them. Akrapovic RACING/EVOLUTION exhaust system will certainly help you reduce lap times on racing track.

PERFORMANCE

Measurements of the Akrapovic RACING / EVOLUTION system on the KAWASAKI ZX 6-R (without noise damper):

Power & Torque: Akrapovic exhaust system gives the ZX 6-R even more racing character. Power starts to grow significantly from 6000 rpm through midrange and overrev range, where we measured 121,5 HP at back wheel. Biggest power increase is 6.5 HP at 14280 rpm. The torque curve is increased throughout the entire rpm range and gives more easy to drive engine characteristics.

CONFIGURATION

The Akrapovic Racing and Evolution systems are identical except for their choice of materials. The Racing system is made of stainless steel, the Evolution titanium. The header tubes, collector, link pipe and muffler are connected with sleeve joints held together with silicon-shielded tensioning springs. The header tubes also include interference crossover tubes, and the system also has a fitting for installing a lambda sensor. The system's collector and link pipe are combination of conical and cylindrical tubes. The muffler is made entirely of titanium, only outlet cap is in carbon fiber. Muffler is attached to the frame using an Akrapovic carbon-fiber clamp. The Akrapovic exhaust system also comes with an Akrapovic stainless steel bracket which must be installed in order to mount the rear light harness.

| | PERFORMANCE | | |
|--|---------------|---------------|----------------------|
| | stock | AKRAPOVIC | max. increased power |
| max. rear wheel power HP / rpm (measured on SuperFlow Cycle Dyn) | 114.9 / 14200 | 121.5 / 14280 | 6.5 / 14280 |

| | CONFIGURATION | | |
|------------|--|--|--|
| | header tubes | collector | link pipe |
| material | TITANIUM (Evolution) STAINLESS STEEL (Racing) | TITANIUM (Evolution) STAINLESS STEEL (Racing) | TITANIUM (Evolution) STAINLESS STEEL (Racing) |
| tube shape | HYDROFORMING | CYLINDRICAL | CONICAL - CYLINDRICAL |

| | | | | |
|-------------------------------------|---|--|---|------------|
| interference crossover tubes | YES | lambda sensor | YES(3x) | |
| header tube inner sleeves | S.S. CNC MACHINED | header tube flanges | ALU CNC MACHINED | |
| header tubes - collector connection | SLEEVE JOINT + SILICON SHIELDED SPRINGS | collector / header tube - link pipe connection | SLEEVE JOINT + SILICON SHIELDED SPRINGS | |
| link pipe - muffler connection | SLEEVE JOINT + SILICON SHIELDED SPRINGS | muffler inlet cap /outlet cap | TITANIUM / CARBON-FIBER | |
| muffler metal interior | TITANIUM | muffler outer sleeve | TITANIUM | |
| muffler clamp | CARBON-FIBER | muffler bracket | MUFLER HEAT SHIELD BRACKETS:SS LICENCE PLATE BRACKET: SS | |
| muffler insert | EU | NOISE DAMPER | heat shield | NO (STOCK) |
| | US | - | catalytic converter | NO (STOCK) |

| | ADDITIONAL DATA | | | | |
|---|-----------------|-----------|---------------------------------------|----------------|-------------------|
| | stock | AKRAPOVIC | | difference | |
| | | RACING | EVOLUTION | stock - RACING | stock - EVOLUTION |
| weight comparison (kg) | 11.55 | 6.28 | 4.71 | 5.27 | 6.84 |
| noise measurements (dB / rpm) | stock | | AKRAPOVIC | | |
| | 59 / 7000 | | 101.9(103.3 for race use only) / 7000 | | |
| possibility of periodic service without removing A.E.S. | oil | | oil filter | | |
| | YES | | YES | | |
| legal for street use | NO | | | | |

Technical specifications of Akrapovic exhaust systems and related products subject to change without notice.

Product code: S-K6R5-ACT, S-K6RFT5T-ACT
S-K6EFT5T-ACT (open - for racing use)

Akrapovic Racing / Evolution Exhaust System for the Kawasaki ZX-6 R (2007)



Akrapovic Exhaust System Technology copyright 2007, all rights reserved

Road
Program

Product code: S-K6R5-ACT, S-K6RFT5T-ACT
S-K6EFT5T-ACT (open - for racing use)

Akrapovic Racing / Evolution Exhaust System for the Kawasaki ZX-6 R (2007)

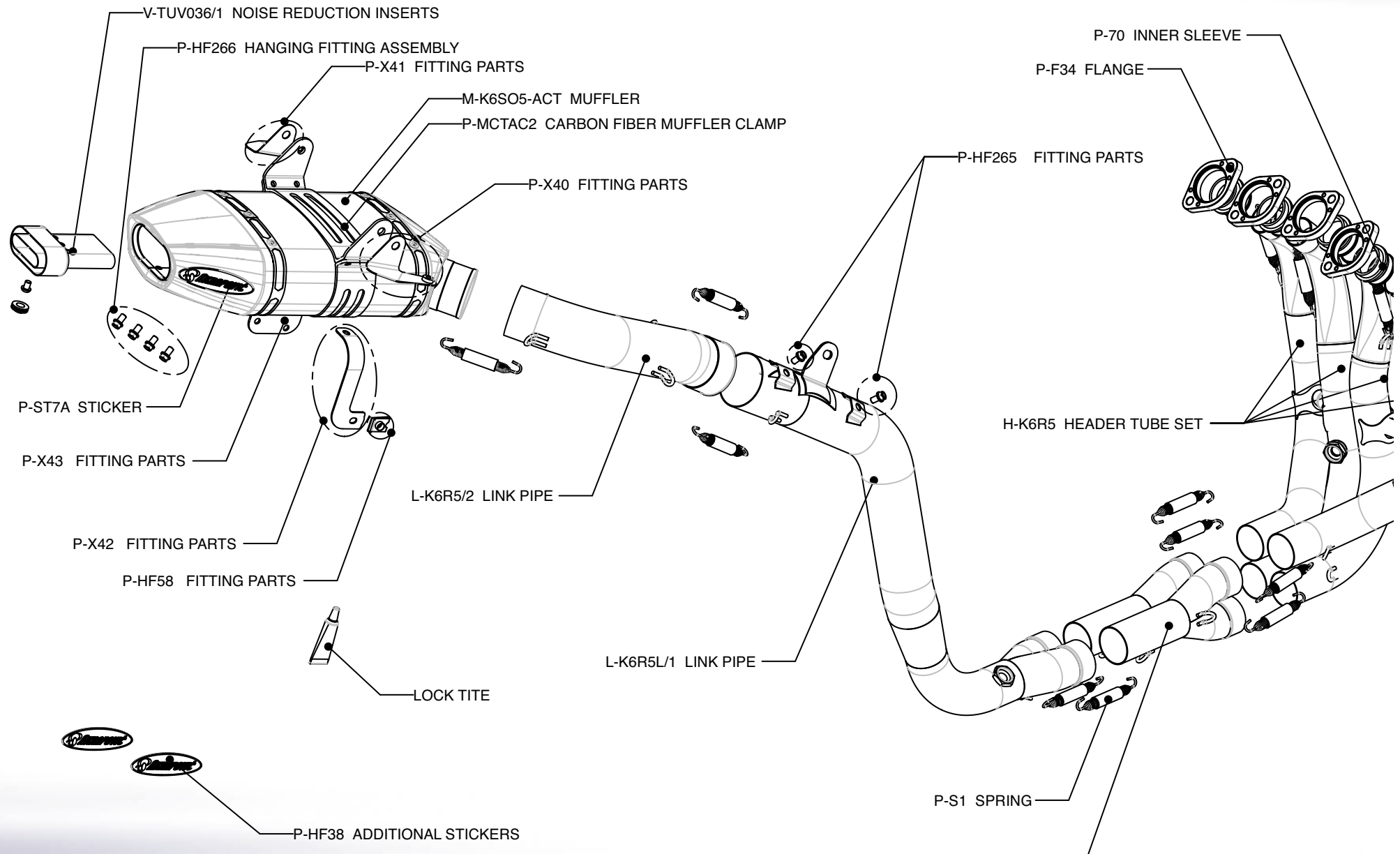


Akrapovic Exhaust System Technology copyright 2007, all rights reserved

Road
Program

Product code: S-K6R5-ACT, S-K6RFT5T-ACT
S-K6EFT5T-ACT (open - for racing use)

Akrapovic Racing Exhaust System for the Kawasaki ZX-6 R (2007)



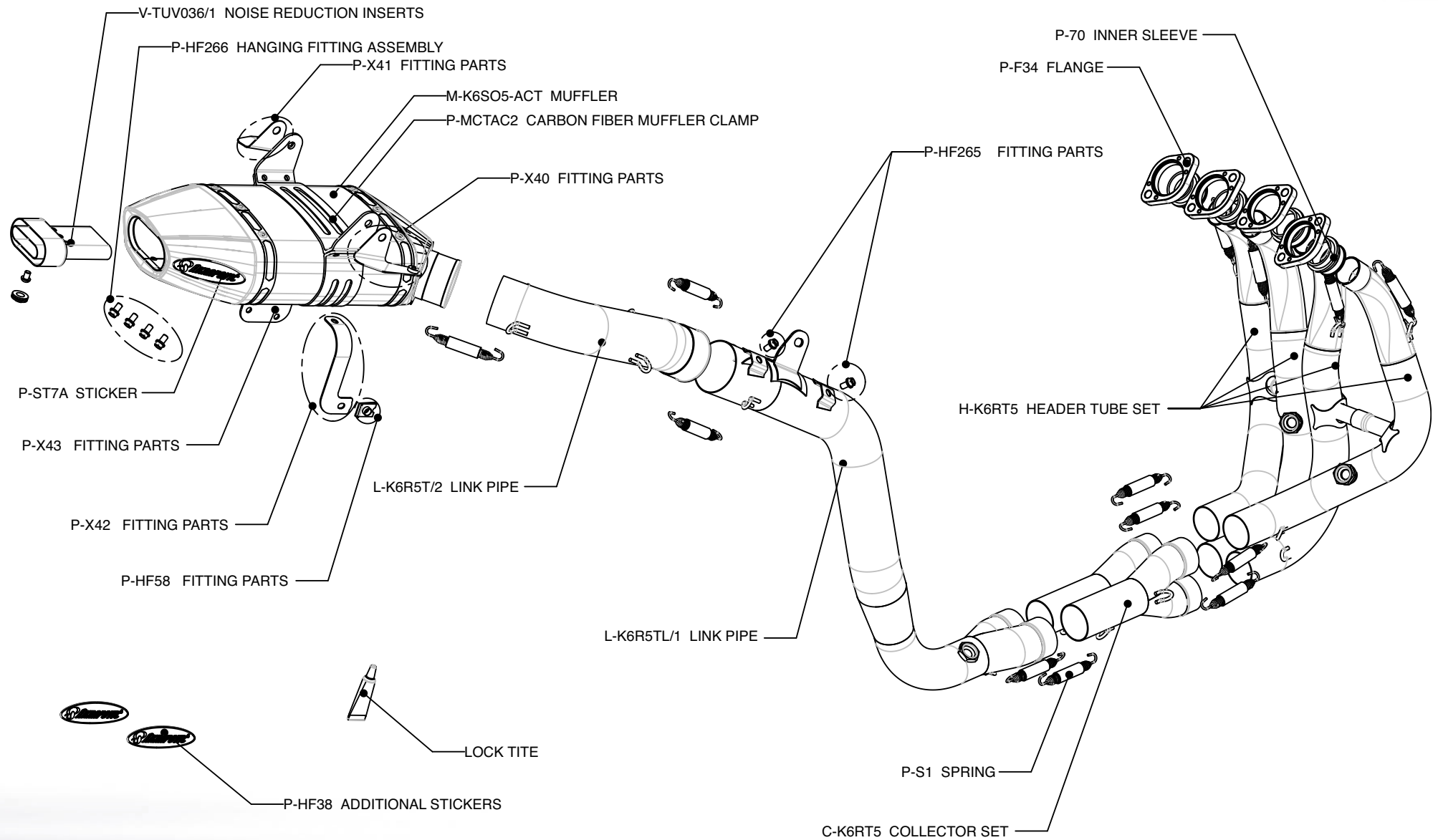
Road
Program

Product code: S-K6R5-ACT



Akrapovic Exhaust System Technology copyright 2007, all rights reserved

Akrapovic Evolution Exhaust System for the Kawasaki ZX-6 R (2007)



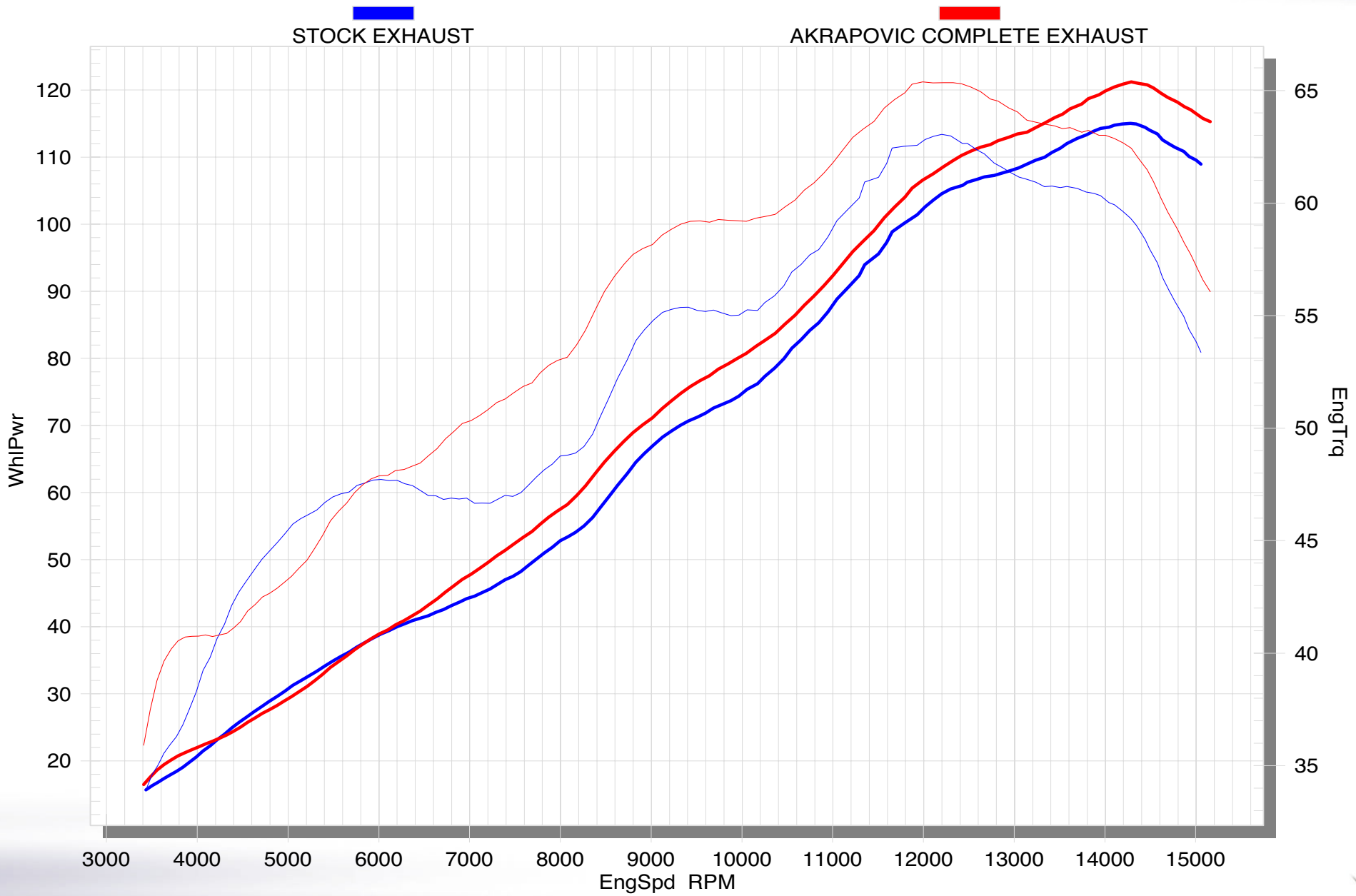
Akrapovic Exhaust System Technology copyright 2007, all rights reserved

Road Program

Product code: S-K6RFT5T-ACT
S-K6EFT5T-ACT (open - for racing use)



Akrapovic Racing / Evolution Exhaust System for the Kawasaki ZX-6 R (2007)



Road Program

Product code: S-K6R5-ACT, S-K6RFT5T-ACT
S-K6EFT5T-ACT (open - for racing use)



Akrapovic Exhaust System Technology copyright 2007, all rights reserved