



Honda SH 125, SH 150, PS 125, PS 150

RACING STREET LEGAL EXHAUST SYSTEM

Honda SH 125, SH 150, PS 125, PS 150

RACING STREET LEGAL EXHAUST SYSTEM

DESCRIPTION

In addition to increasing your power, the Akrapovič Racing system gives your scooter a distinctive deeper sound and also changes its visual appearance. Even from afar you can see and hear that this is no mass-produced system. This system was developed based on rich experience and the result is a product that suits a scooter perfectly. Installation is a snap. Adding the optional catalytic converter makes the Racing exhaust system street legal.

PERFORMANCE

Measurements of the Akrapovič Racing system on the Honda SH/PS 125 (with muffler insert):

Power & Torque:

The Akrapovič Racing exhaust system increases your engine power and its torque at practically every rpm. Maximum power of 10.3 HP is reached at 7370 rpm. The greatest power gain is at 7750 rpm.



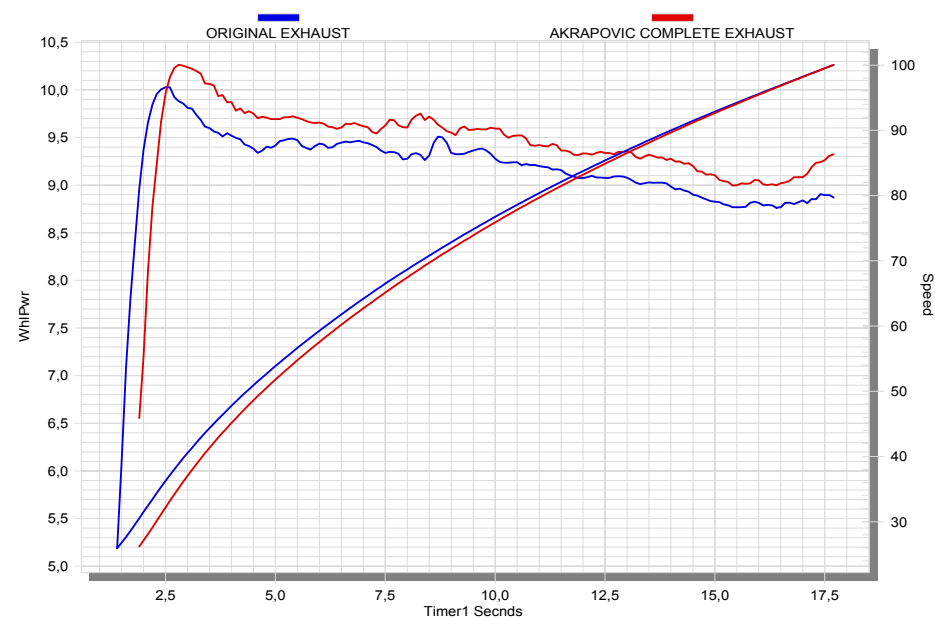
PERFORMANCE			
	stock	AKRAPOVIC	max. increased power
max. rear wheel power HP / rpm <small>(measured on SuperFlow Cycle Dyn)</small>	10 / 7200	10.3 / 7370	0.5 / 7750

ADDITIONAL DATA					
weight comparison (kg)	stock	AKRAPOVIC		difference	
	6.5	RACING	EVOLUTION	stock - RACING	stock - EVOLUTION
		4.3	-	2.3	-

noise measurements (dB / rpm)	stock	AKRAPOVIC
		82 / 4500
legal for street use	YES	

Technical specifications of Akrapovic exhaust systems and related products subject to change without notice.

Product code: S-H125R1-HRSS

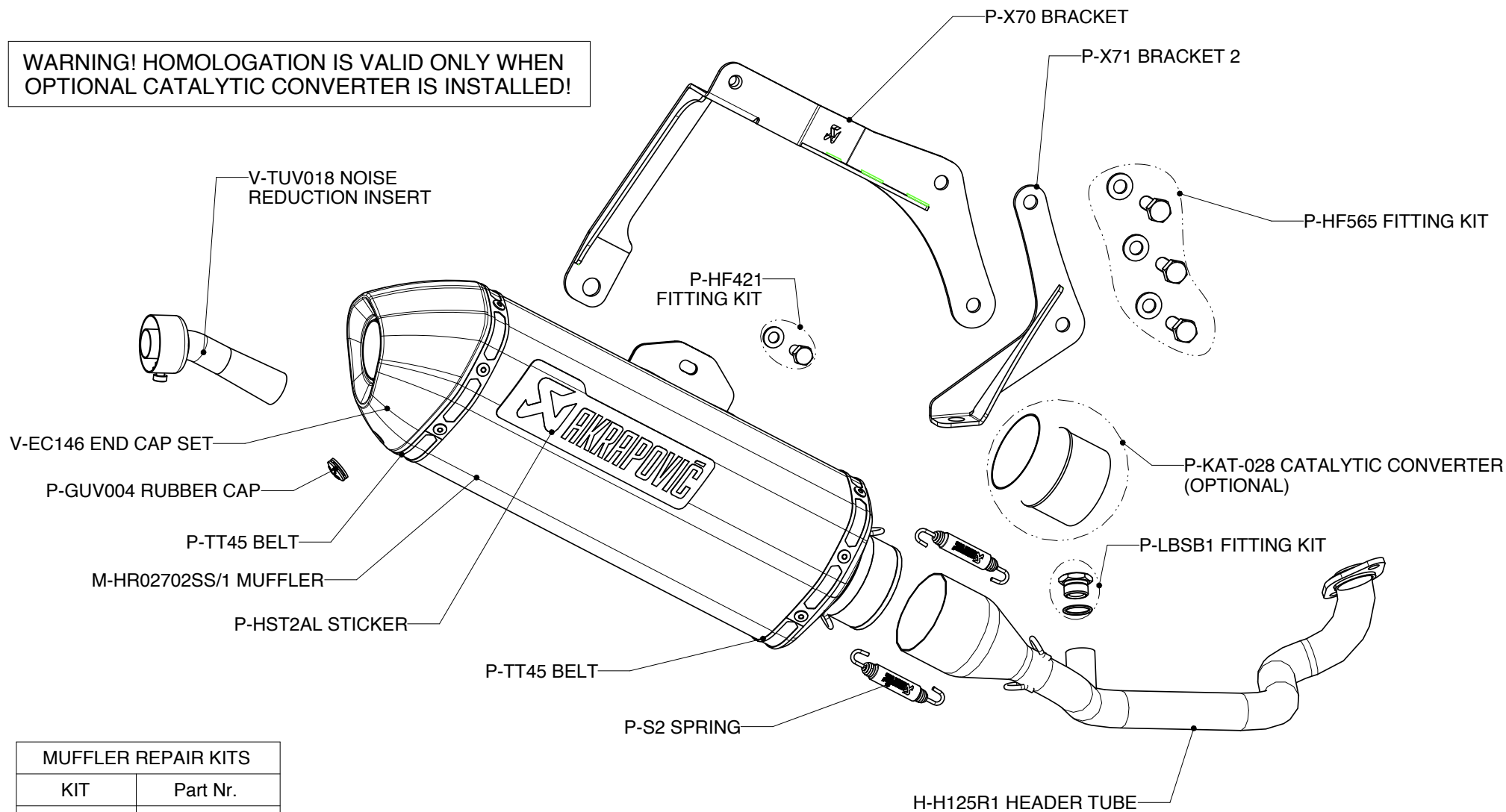


www.akrapovic.com

Akrapovič d.d. 2011 all rights reserved

14.04.2011

**WARNING! HOMOLOGATION IS VALID ONLY WHEN
OPTIONAL CATALYTIC CONVERTER IS INSTALLED!**



MUFFLER REPAIR KITS	
KIT	Part Nr.
REPACK	P-RPCK58
SLEEVE	P-RKS300RSS35