



# HONDA CRF 250 R (2010)

RACING & EVOLUTION EXHAUST SYSTEM

The Akrapovic Racing and Evolution complete exhaust systems are the championship winning flagships of our product lines. They are designed for competition-oriented MX riders who demand maximum performance from their exhaust systems, made of extremely durable high grade titanium. With their production quality, engine performance improvements, weight reduction and modern Hexagonal conical muffler design, they satisfy even top pro racers. The systems are designed for two markets; in the USA they are available with an approved spark arrester, and for the EU and other non-US markets they come with a noise damper. For the Racing system we use stainless steel tubes and composite end cap while we use titanium tubes and carbon-fiber end cap for the Evolution system.

**PERFORMANCE**

Measurements of the Akrapovic EVOLUTION system on the HONDA CRF 250 R (with muffler insert):

Power & Torque: The Akrapovic Evolution and Racing systems deliver a performance increase throughout nearly the entire rpm range. It is most pronounced in the bottom and the top of the range. The systems deliver increased torque similar to the power increase. Max. increased power of 3.9 HP was measured at 5600 rpm, while max. power of 36.6 HP was measured at 11300 rpm.



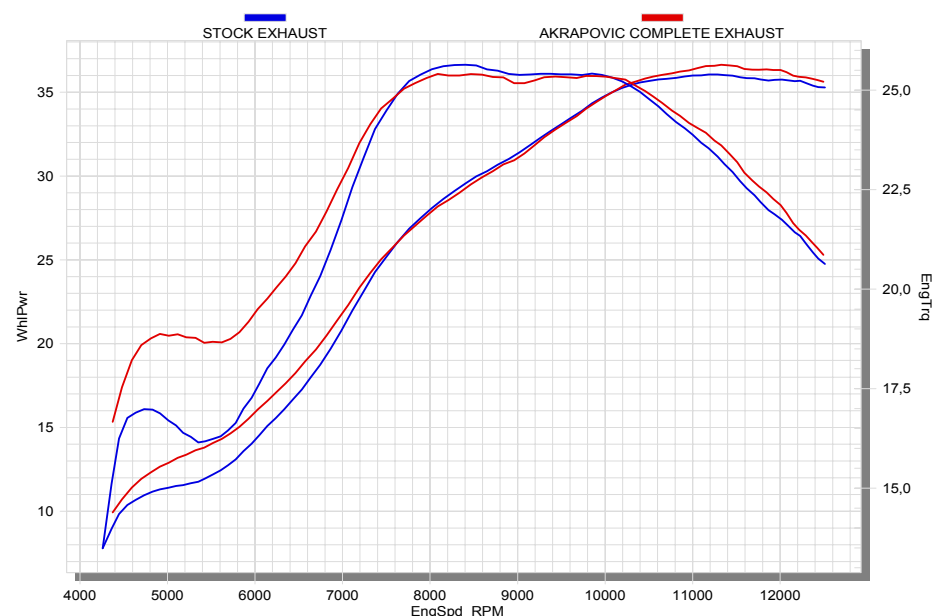
PERFORMANCE			
	stock	AKRAPOVIC	max. increased power
max. rear wheel power HP / rpm <small>(measured on SuperFlow Cycle Dyn)</small>	36.0 / 11350	36.6 / 11300	3.9 / 5600

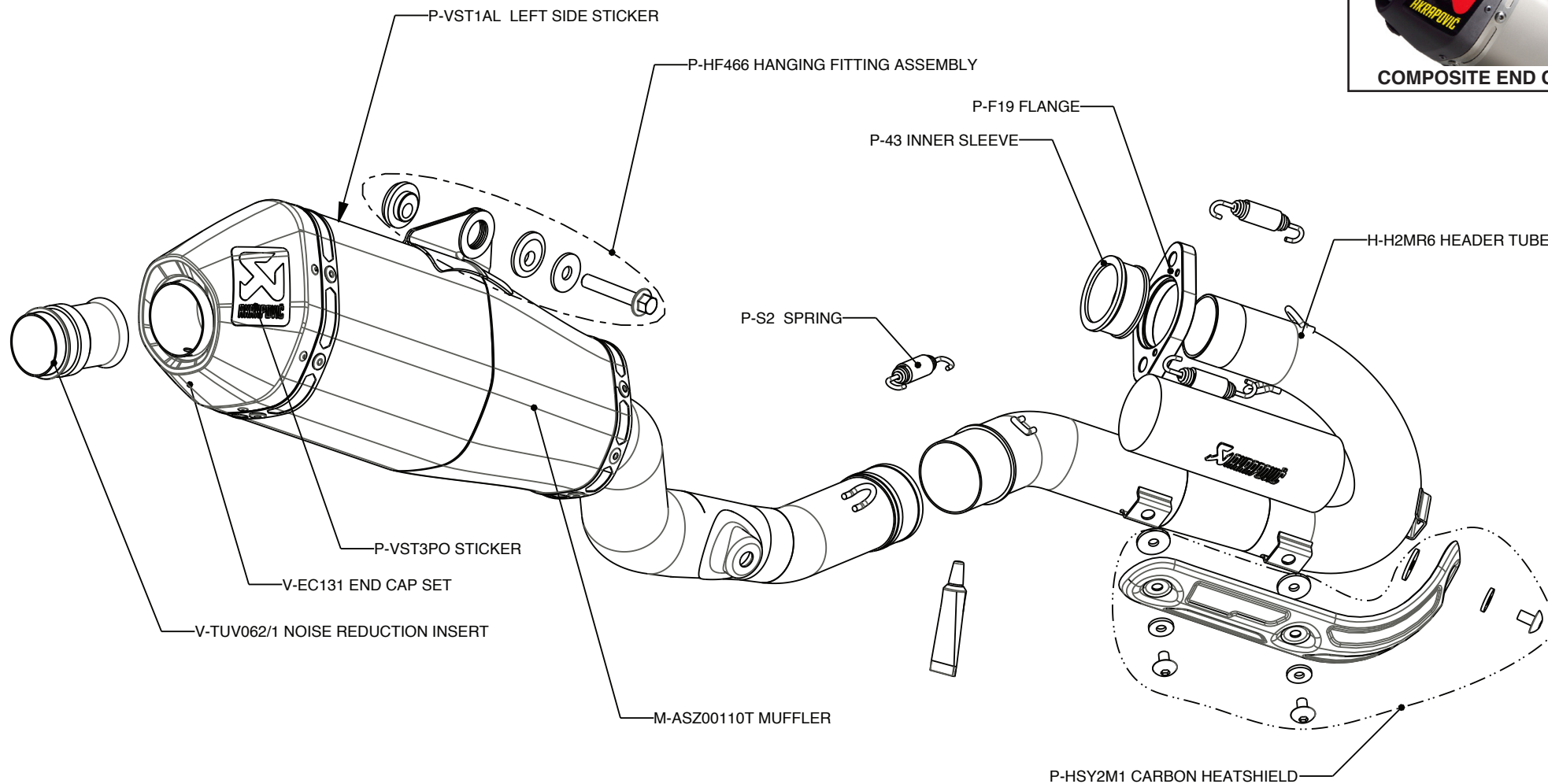
ADDITIONAL DATA					
weight comparison (kg)	stock	AKRAPOVIC		difference	
	2.98	RACING	EVOLUTION	stock - RACING	stock - EVOLUTION
		2.96	2.18	0.02	0.8

noise measurements (dB / rpm)	stock	AKRAPOVIC
	94 / 5000	94 / 5000
legal for street use	NO	

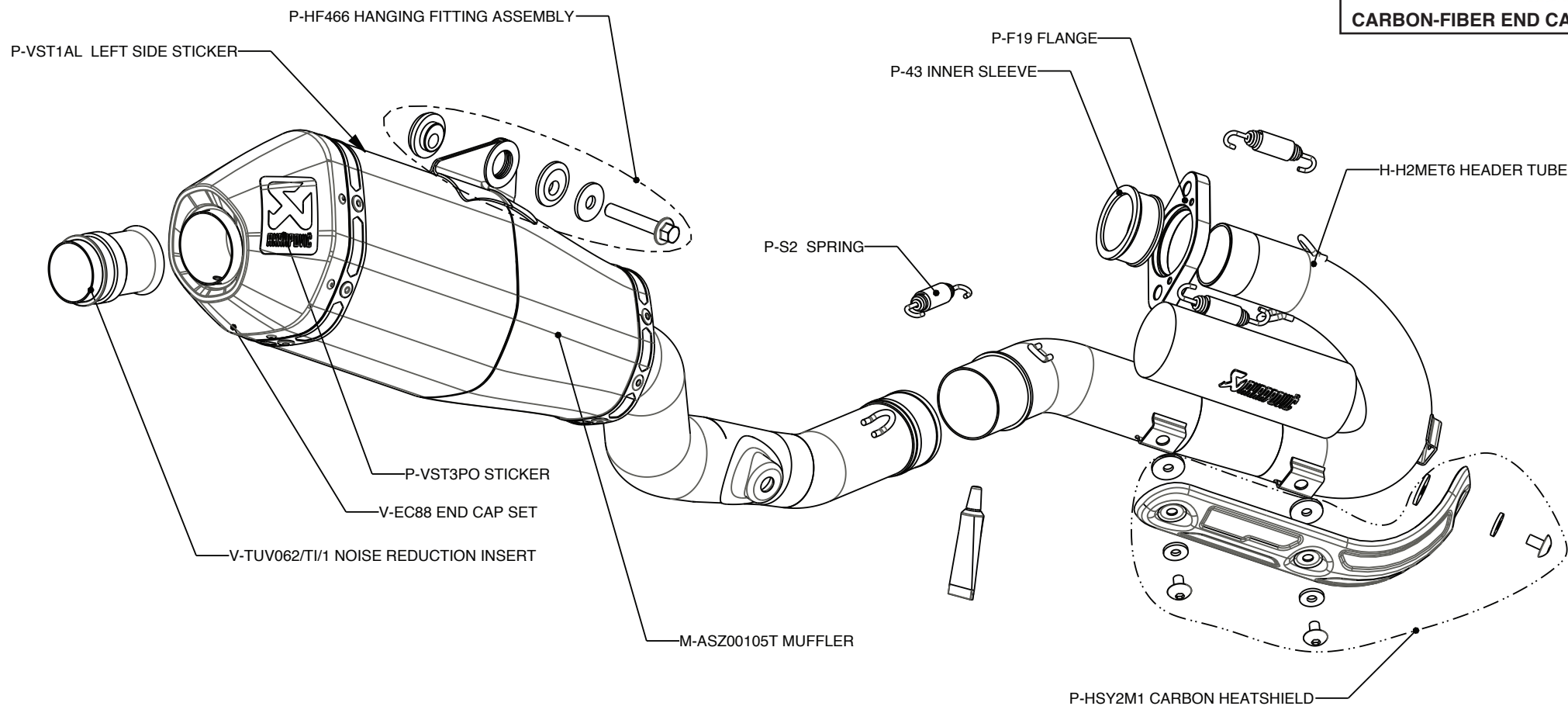
Technical specifications of Akrapovic exhaust systems and related products subject to change without notice.

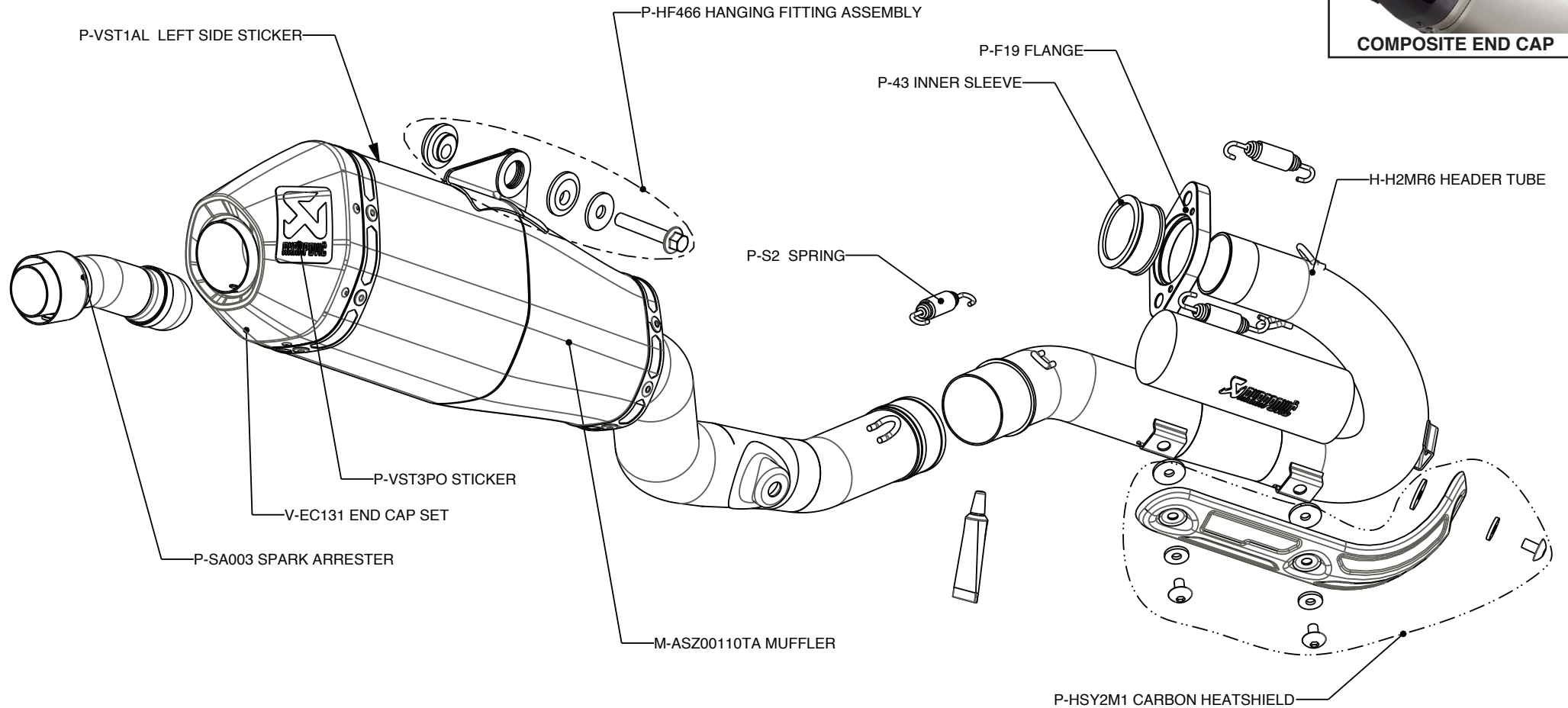
Product code: S-H2MR1-ASZT, S-H2ME1-ASZT  
S-H2MR1-ASZTA, S-H2ME1-ASZTA US market





For the Racing system we use stainless steel tubes and composite end cap





For the Racing system we use stainless steel tubes and composite end cap

Product code: S-H2MR1-ASZTA US market

