



HONDA CRF 250R
(2008)

RACING & EVOLUTION TWIN EXHAUST SYSTEM

www.akrapovic.net

The Akrapovic Racing and Evolution complete exhaust systems are the flagships of our product lines. They are designed for competition-oriented MX riders who demand maximum performance from their exhaust systems. With their production quality, engine performance improvements and modern Hexagonal muffler design they satisfy the requirements of all riders. The systems are designed for two markets; in the US they are available with an approved spark arrester, and for the EU and other non-US markets they come with a noise damper. New for 2008 is additional chamber that helps to reduce noise emission and provides better power and torque at low rpm range.

PERFORMANCE

Measurements of the Akrapovic EVOLUTION system on the HONDA CRF 250R (without muffler inserts):

Power & Torque: The Akrapovic Evolution and Racing systems deliver a performance increase throughout the entire rpm range. It is most pronounced in the bottom and the top of the range. The systems deliver increased torque similar to the power increase. Max. increased power of 2.4 HP was measured at 12150 rpm, while max. power of 36.2 HP was measured at 12100 rpm.

CONFIGURATION

The twin-pipe Akrapovic Evolution system uses titanium tubing and the twin-pipe Akrapovic Racing uses stainless steel tubing. The tubes for the header assembly are flared to provide improved exhaust gas flow. The systems' individual components - header tubes, collectors and link pipes - are attached using sleeve joints held together with silicon-shielded springs. The link pipes, which are welded to the mufflers, are extremely short. This system includes pair of HEXAGONAL mufflers. The mufflers have in case of Evolution titanium inlet caps and perforated inner sleeves, in case of Racing stainless steel inlet caps and perforated inner sleeves. The outlet cap is made of carbon-fiber for evolution and composite polymer for Racing system. The outer sleeves are made of titanium for the Racing version. For the Evolution both options of the outer sleeve are available - carbon-fiber and titanium. The mufflers are attached to the frame using Akrapovic off-road carbon-fiber clamps. Evolution system also includes a carbon-fiber heat shield.

	PERFORMANCE		
	stock	AKRAPOVIC	max. increased power
max. rear wheel power HP / rpm <small>(measured on Dynojet ATV)</small>	34.3 \ 11170	36.2 \ 12100	2.4 \ 12150

	CONFIGURATION		
	header tubes	collector	link pipe
material	TITANIUM / STAINLESS STEEL/	-	TITANIUM / STAINLESS STEEL/
tube shape	CONICAL	-	CONICAL

interference crossover tubes	NO (CHAMBER)	lambda sensor	NO
header tube inner sleeves	S.S. CNC machined	header tube flanges	S.S. laser cut
header tubes - collector connection	-	collector / header tube - link pipe connection	SLEEVE JOINT + SILICON SHIELDED SPRING
link pipe - muffler connection	WELDED	muffler inlet cap /outlet cap	Ti - composite polymer \ S.S. - Carb
muffler metal interior	TITANIUM / STAINLESS STEEL	muffler outer sleeve	TITANIUM or CARBON \ TITANIUM
muffler clamp	CARBON-FIBER OFF ROAD	muffler bracket	-
muffler insert	EU	-	heat shield
	US	-	catalytic converter
			Carbon-fiber
			NO

	ADDITIONAL DATA				
	stock	AKRAPOVIC		difference	
weight comparison (kg)	4.13	racing	evolution	stock - racing	stock - evolution
		3.00	2.6	1.13	1.53
noise measurements (dB / rpm)	stock		AKRAPOVIC		
	94 / 5000		94 / 5000		
possibility of periodic service without removing A.E.S.	oil		oil filter		
	YES		YES		
legal for street use	NO				

Technical specifications of Akrapovic exhaust systems and related products subject to change without notice.



Product code: (108780) S-H2MR6-VT racing
(108778) S-H2MET6T-VT evolution



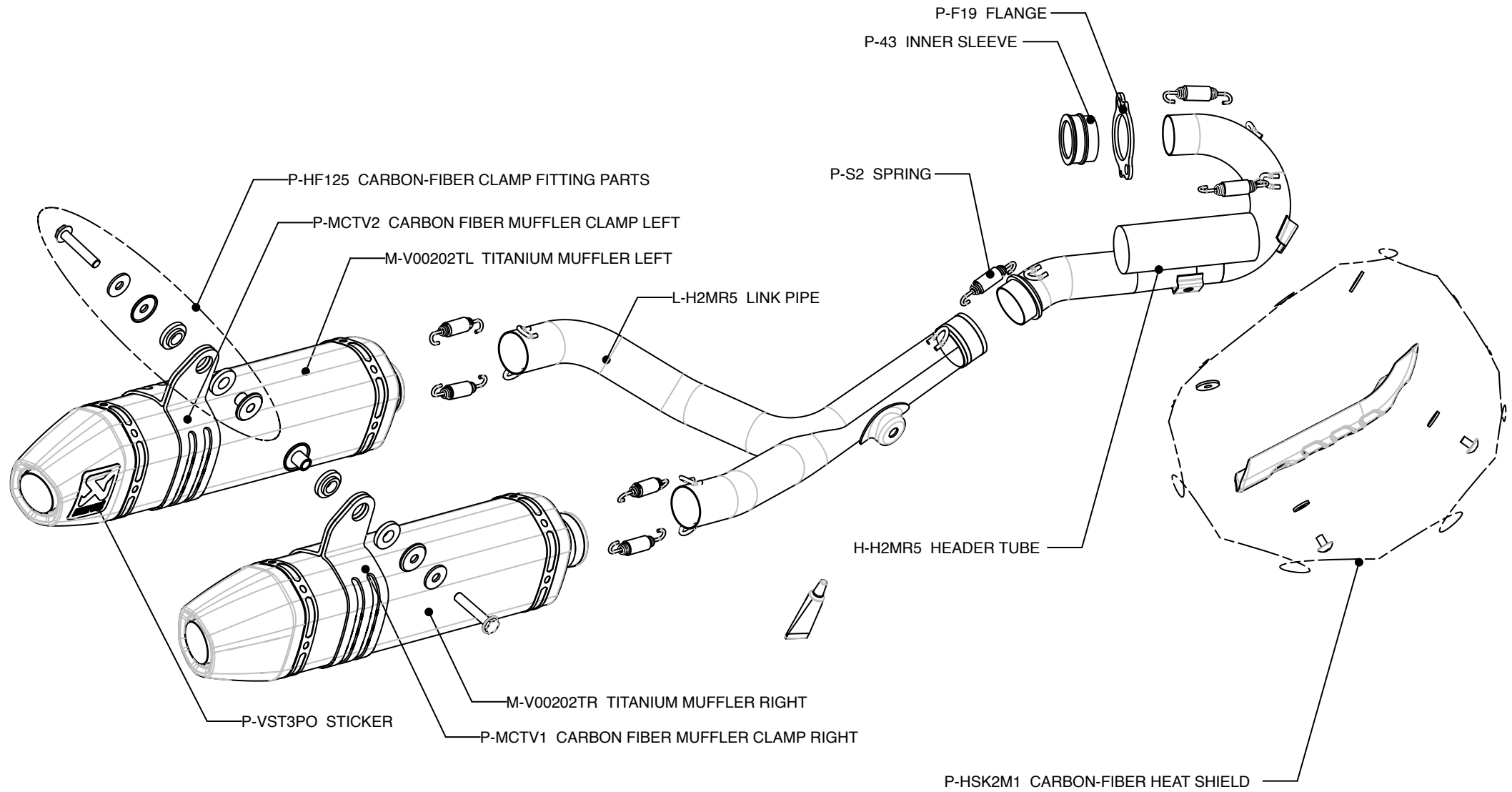
www.akrapovic.net
Akrapovič d.d. 2008 all rights reserved



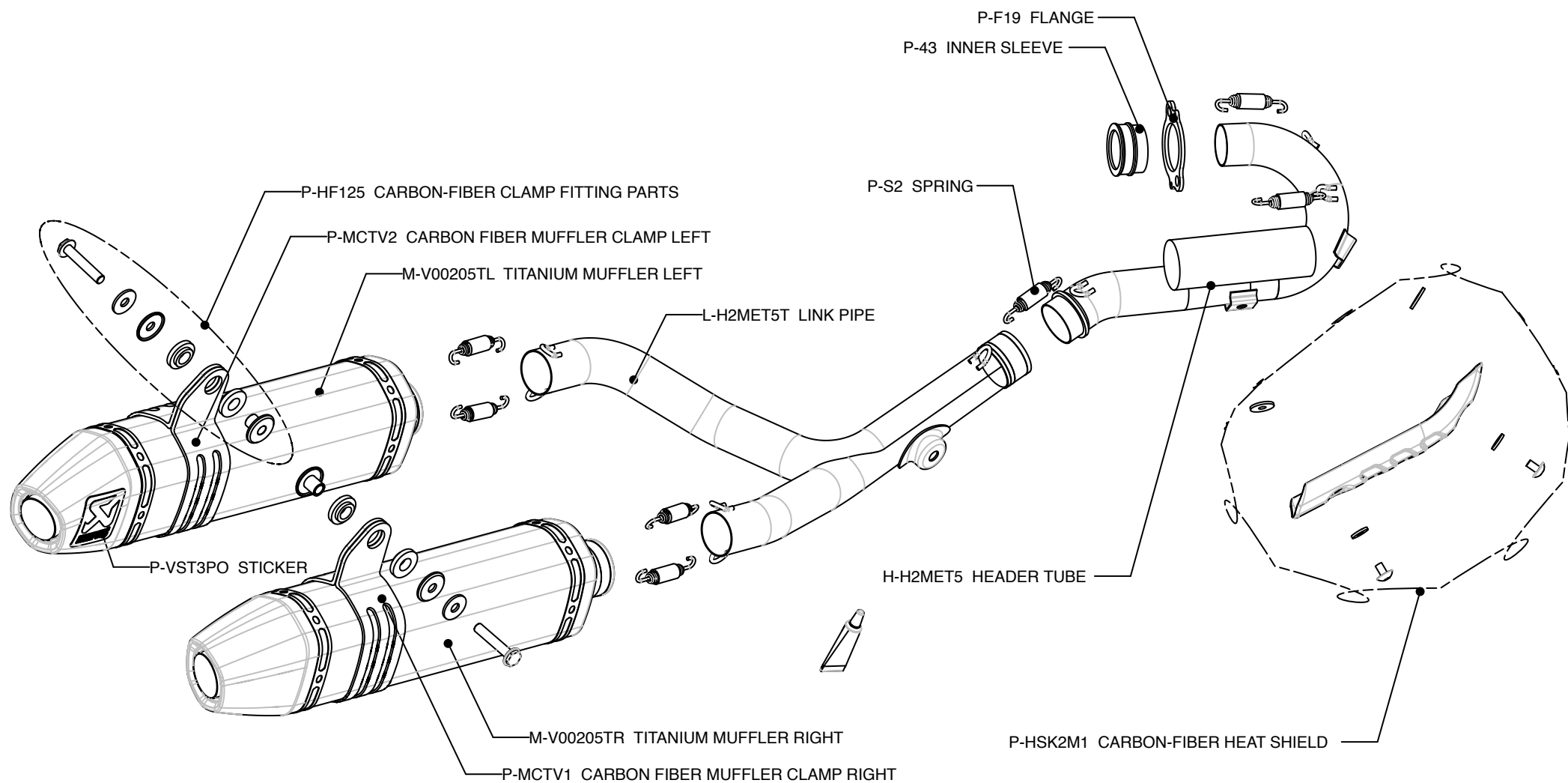
Product code: (108780) S-H2MR6-VT racing
(108778) S-H2MET6T-VT evolution



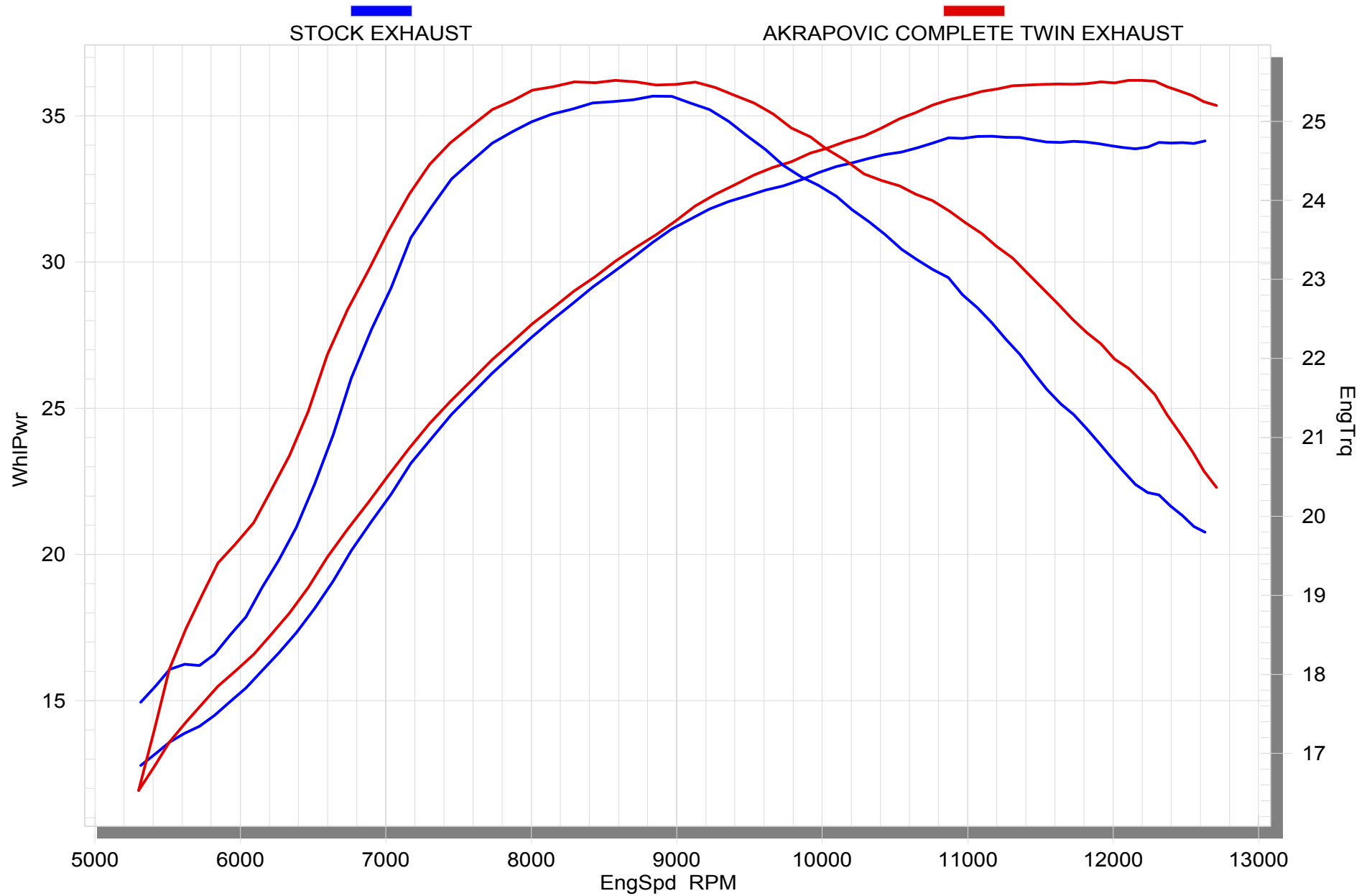
Product code: (108780) S-H2MR6-VT racing
(108778) S-H2MET6T-VT evolution



Product code: (108780) S-H2MR6-VT racing
 (108778) S-H2MET6T-VT evolution



Product code: (108780) S-H2MR6-VT racing
 (108778) S-H2MET6T-VT evolution



Product code: (108780) S-H2MR6-VT racing
(108778) S-H2MET6T-VT evolution