



Racing Line (SS)

Product code: **S-H125R10-HRSS**

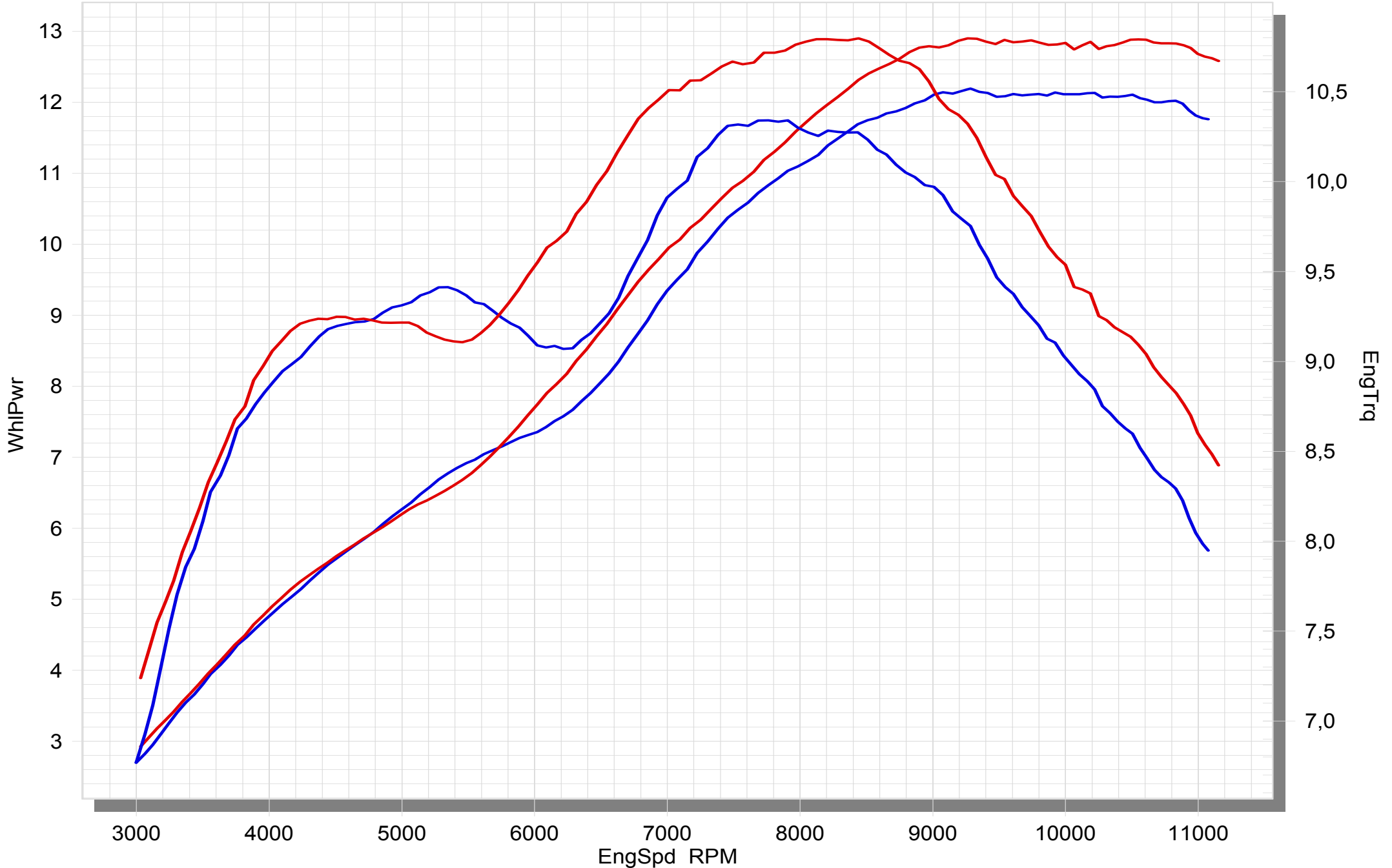
The Akrapovič Racing system is designed for riders who demand maximum performance. Racing system is lighter if compared to stock exhaust system and features exceptional production quality, hi-tech materials and of course increased engine performance combined with pure racing sound output

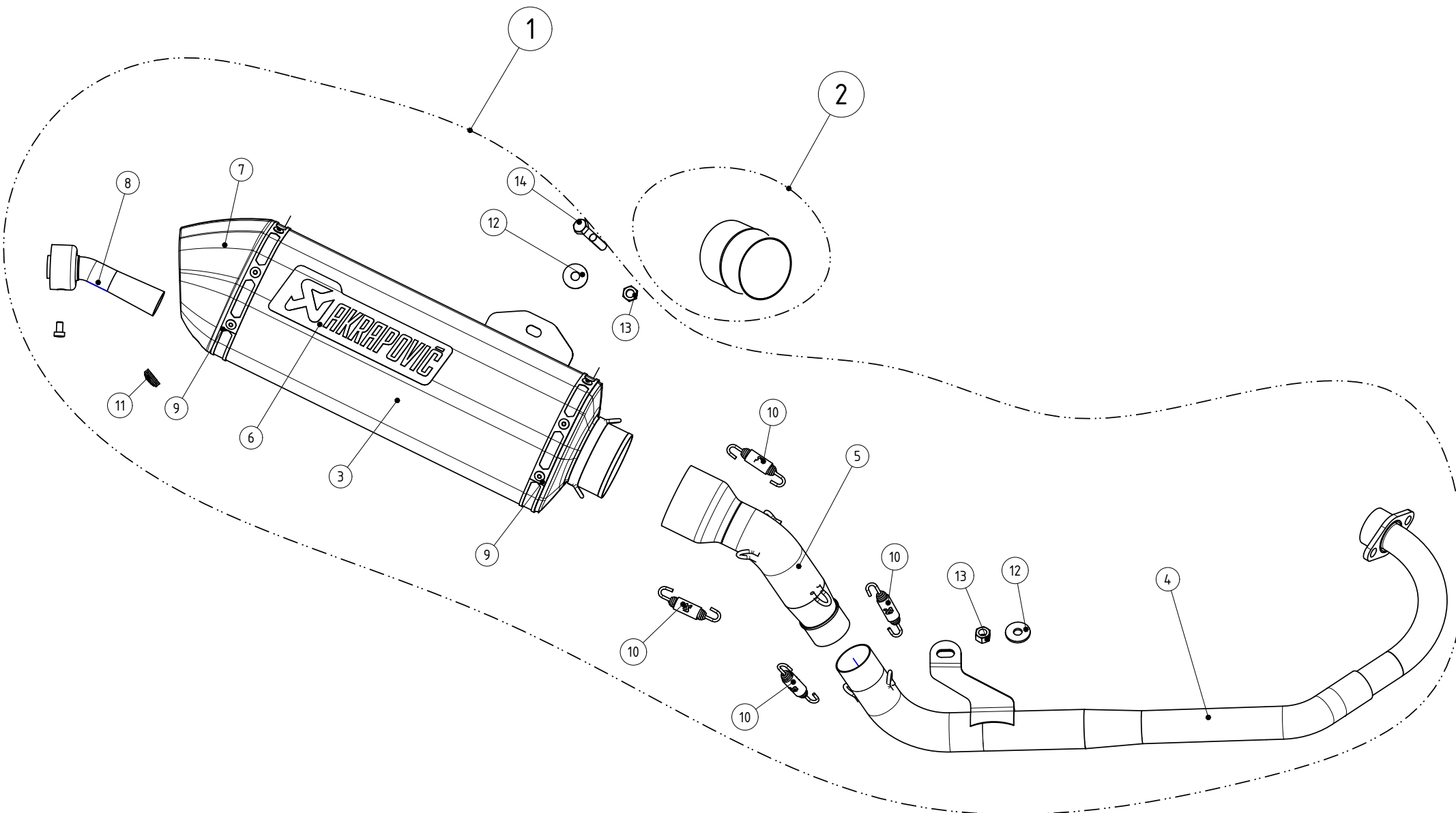
TECHNICAL DATA	UNIT	STOCK	AKRAPOVIČ	DIFFERENCE
maximum power	kW	9 at 9280 rpm	9.5 at 9260 rpm	+ 0.6 at 9500 rpm
	HP (m)	12.2 at 9280 rpm	12.9 at 9260 rpm	+ 0.8 at 9500 rpm
	HP (i)	12 at 9280 rpm	12.7 at 9260 rpm	+ 0.8 at 9500 rpm
maximum torque	Nm	10.3 at 7680 rpm	10.8 at 8120 rpm	+ 0.7 at 6300 rpm
	lb-ft	7.6 at 9280 rpm	7 at 9260 rpm	+ 0.4 at 9500 rpm
weight	kg	5.6	4.1	- 1.5
	lb	12.3	12.3	- 3.3
static noise level	dB	82	82	0
	rpm	5000	5000	0

HONDA CBR125 R

ORIGINAL

RACING - EC TYPE APPROVED





MUFFLER REPAIR KITS	
REPACK	15
SLEEVE	16

WARNING! EC TYPE APPROVAL IS VALID ONLY WHEN OPTIONAL CATALYST IS INSTALLED!

No.	SALES CODE	DESCRIPTION	QTY.
1	S-H125R10-HRSS	S HO CBR125R HOM HSLSMSS 11	1
3	M-HR02702RR/5	M HSO CBR125R S65R2 S350/50 C45R4/45	1
4	H-H125R2	HE SS D38 HO CBR125	1
5	L-H125R1	LP SS D38/65 HO CBR125 11	1
6	P-HST2AL	nalepka Akrap. HOR 150 AL	1
7	V-EC146	SRO zad. CA R4/1 SS za YA X-MAX250 08-10	1
8	V-TUV018	vložek ses. HOM SS D22/80/43/24° UNI	1
9	P-TT45	trak zak. TI L=414,5 S=16 R SS=0,8 TT45	2
10	P-S2	vzmet SS D10×60 Tip1 z zašč. gumo S2	4
11	P-GUV004	gumi vložek D18 nased-D13 logotip	1
12	P-DR4	podložka SS D8,5/D24×2 ISO7093	2
13	P-FN4	matica šestr. prirob FE M8 SC DIN 6923	2
14	P-FB23	vijak šest. prirob FE M8×45 SC	1
15	P-RPCK58	MMRCK tip 58	1
16	P-RKS300RSS35/2	MRRSK tip 300 SR35 S350R/2	1