



**BMW G 650 X**

**(2008 - 2009)**

[www.akrapovic.com](http://www.akrapovic.com)

**SLIP-ON OPEN & SLIP-ON STREET LEGAL EXHAUST SYSTEM**

The Akrapovic Slip-On system for all three BMW G650X models is an upgrade of the stock exhaust system, and as a base-level tuning modification presents an excellent combination of performance, quality workmanship and affordability. We should also mention the visual enhancement, as the system looks great on the bike's modern lines. For more ambitious riders we also offer an Evolution system. The Slip-On systems for all three models come equipped with noise dampers and catalytic converters and are street legal, but we offer also open system for more racing oriented riders.

**PERFORMANCE**

Measurements of the Akrapovic SLIP-ON system on the BMW G650X (with noise damper):

Power & Torque: the Akrapovic Slip-On system has its greatest effect in the low rpm range. Increased power is also delivered at the top end above 5500 rpm, bringing out the sports character of the bike. The power and torque increases are consistent with a base-level exhaust system modification. Max. increased power is 1.3 HP at 3800 rpm.

**CONFIGURATION**

The Akrapovic Slip-On system is composed of a conical link pipe which is welded to the muffler. The link pipe and header tube are connected using a sleeve joint, which is secured with silicon-shielded springs. The muffler outer sleeve is made of titanium, the inlet cap is stainless steel and the outlet cap is carbon-fiber. The muffler has a built-in noise damper, and for heat protection comes with two Akrapovic Carbon Parts carbon-fiber heat shields.

	PERFORMANCE		
	stock	AKRAPOVIC	max. increased power
max. rear wheel power HP / rpm (measured on Dynojet ATV)	47.1 / 7300	47.1 / 7300	1.3 / 3800

	CONFIGURATION		
	header tubes	collector	link pipe
material	-	-	STAINLESS STEEL
tube shape	-	-	CONICAL

interference crossover tubes	-	lambda sensor	-
header tube inner sleeves	-	header tube flanges	-
header tubes - collector connection	-	collector / header tube - link pipe connection	SLEEVE JOINT + SILICON SHIELDED SPRINGS
link pipe - muffler connection	WELDED	muffler inlet cap /outlet cap	STAINLESS STEEL – CARBON FIBER
muffler metal interior	STAINLESS STEEL	muffler outer sleeve	TITANIUM
muffler clamp	-	muffler bracket	TITANIUM (WELDED)
muffler insert	EU	YES	heat shield
	US	-	catalytic converter
			2X CARBON FIBER
			YES

	ADDITIONAL DATA				
	stock	AKRAPOVIC		difference	
weight comparison (kg)	5.64	S.S. link pipe	TITANIUM link pipe	stock - S.S.	stock - titanium
		3.07	-	2.57	-
noise measurements (dB / rpm)	stock		AKRAPOVIC		
	88 / 3125		88 / 3125		
possibility of periodic service without removing A.E.S.	oil		oil filter		
	YES		YES		
legal for street use	NO / YES				

Technical specifications of Akrapovic exhaust systems and related products subject to change without notice.



Product code: (107575) S-B6SO1C-LT - Open  
(107572) S-B6SO1C-HLT - Street legal

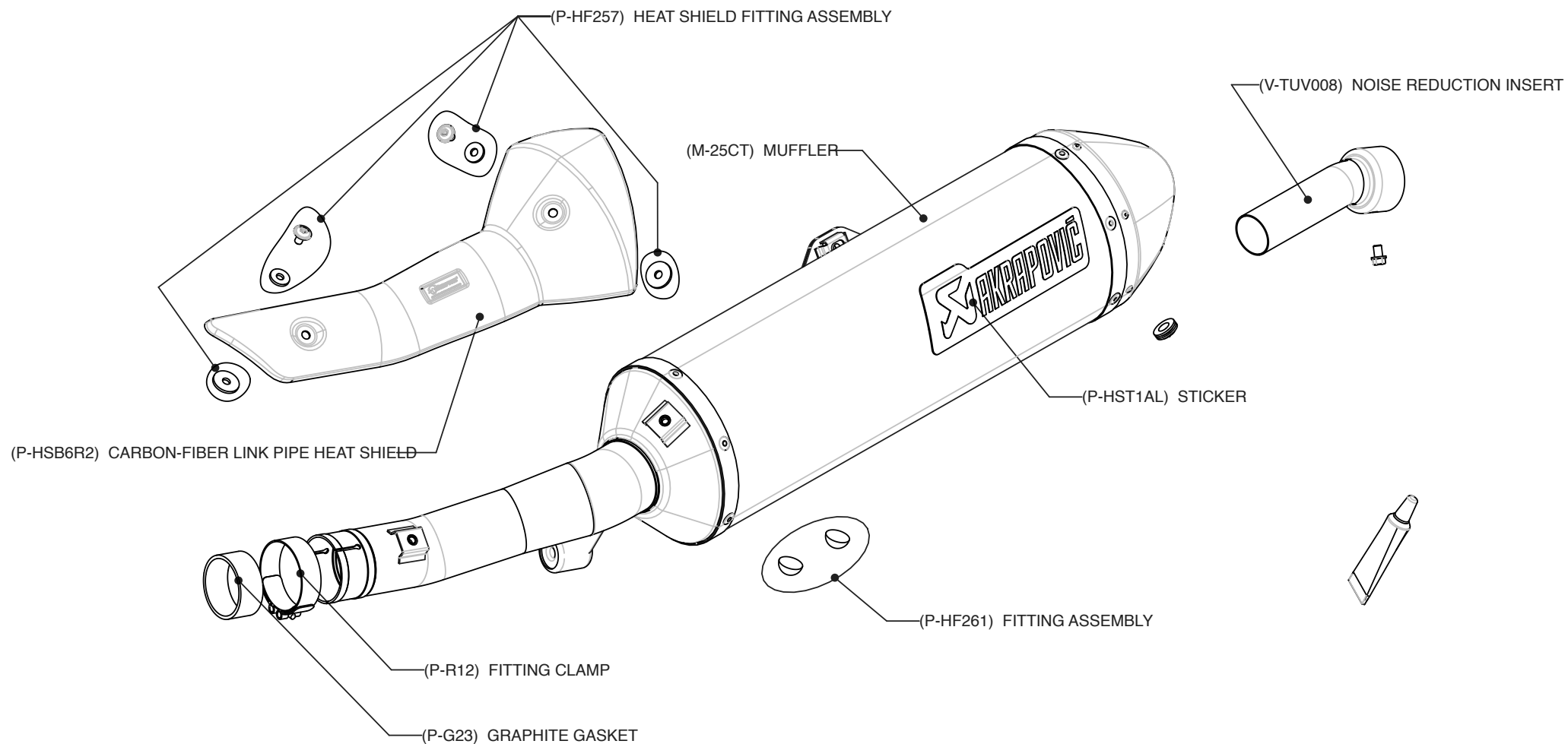


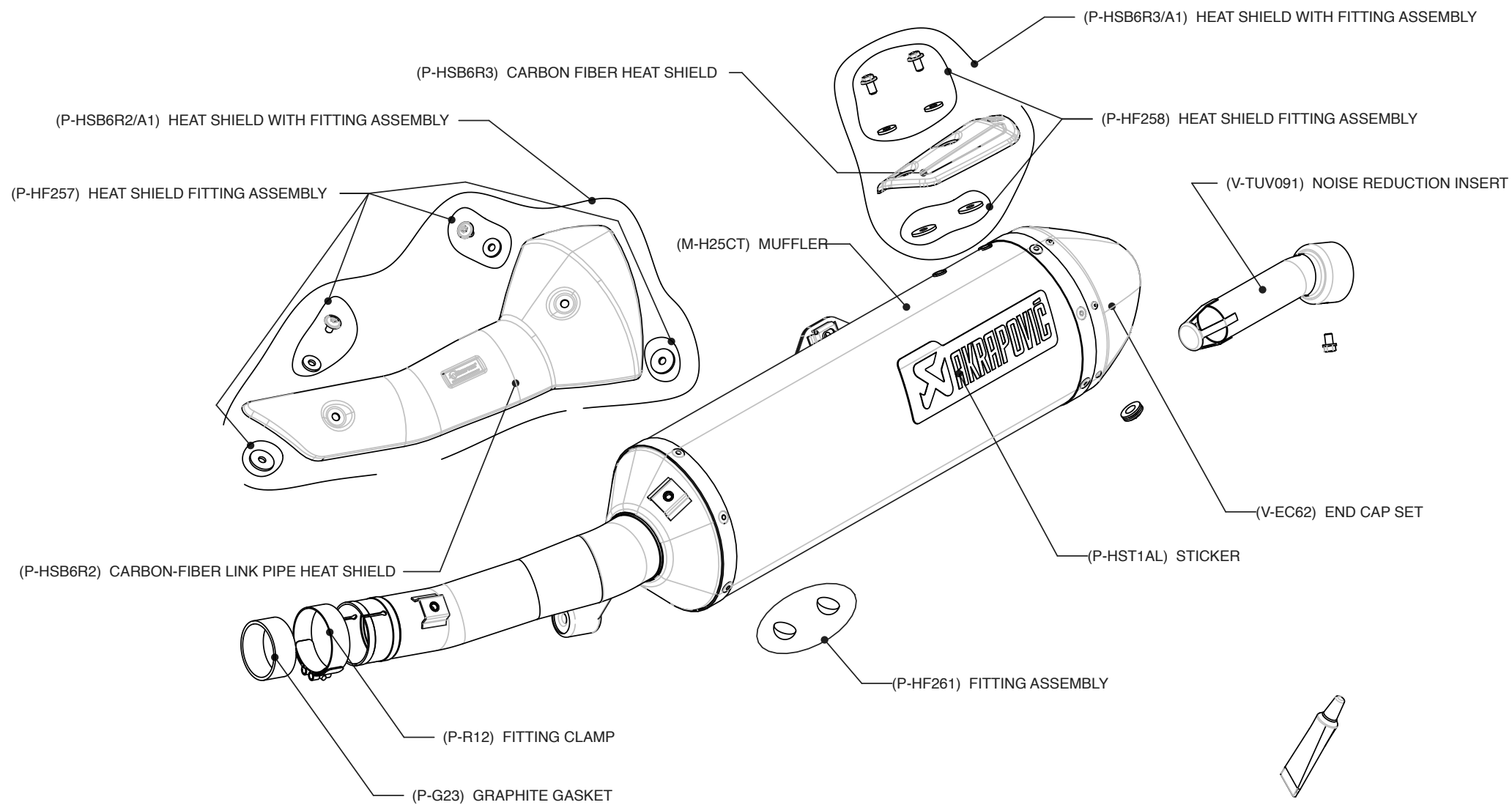
Product code: (107575) S-B6SO1C-LT - Open  
(107572) S-B6SO1C-HLT - Street legal

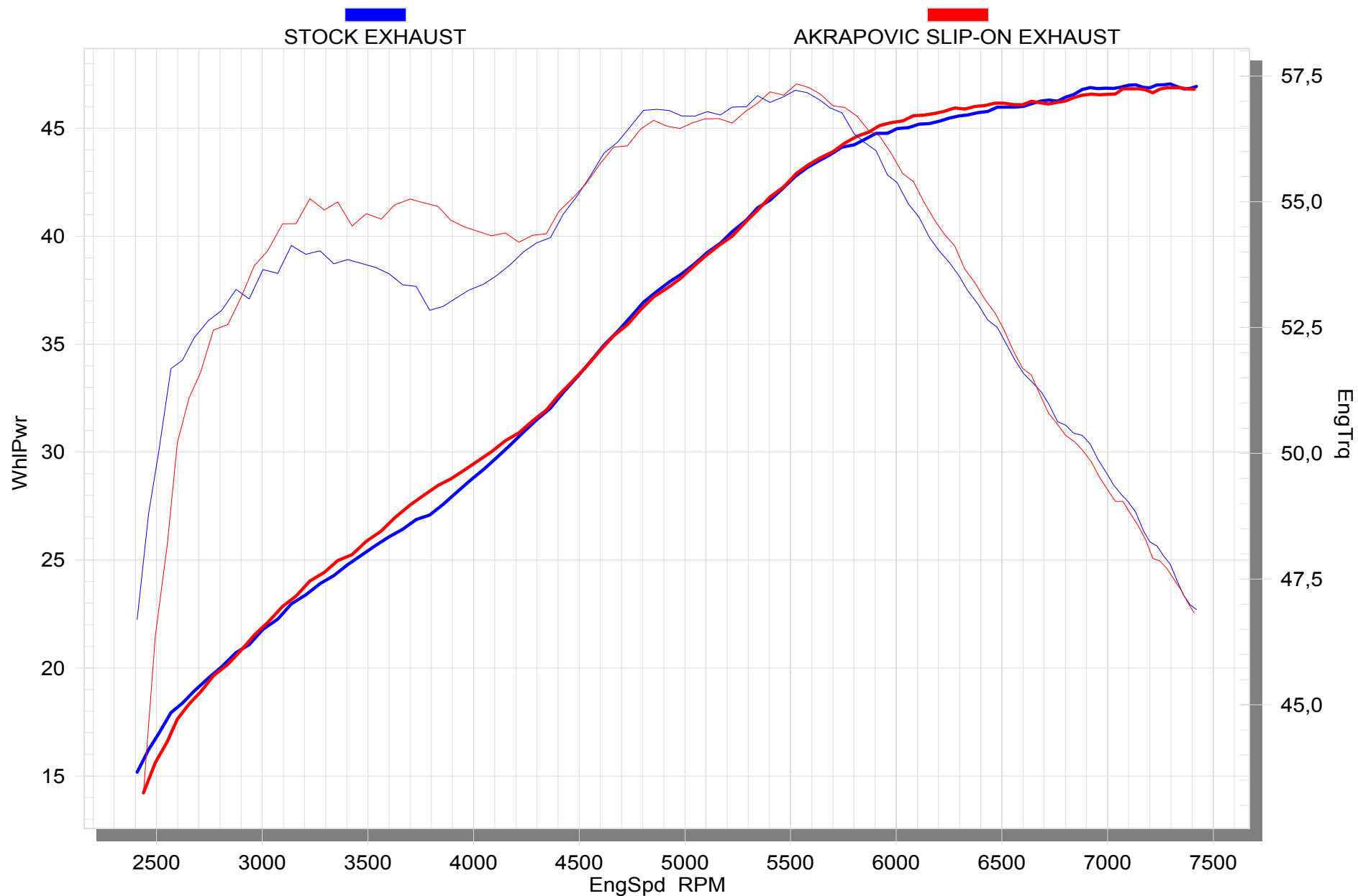




Product code: (107575) S-B6SO1C-LT - Open  
(107572) S-B6SO1C-HLT - Street legal







Product code: (107575) S-B6SO1C-LT - Open  
 (107572) S-B6SO1C-HLT - Street legal